

Advisory Committee Seeks Better Vocational Curriculum

The advisory committee on vocational education for the Chelsea School District is seeking a curriculum that will provide a better vocational education for the students of the district. The committee, which was formed last year, is currently reviewing the existing curriculum and making recommendations for improvement.

The committee is seeking a curriculum that will provide a better vocational education for the students of the district. The committee, which was formed last year, is currently reviewing the existing curriculum and making recommendations for improvement.

The committee is seeking a curriculum that will provide a better vocational education for the students of the district. The committee, which was formed last year, is currently reviewing the existing curriculum and making recommendations for improvement.

The committee is seeking a curriculum that will provide a better vocational education for the students of the district. The committee, which was formed last year, is currently reviewing the existing curriculum and making recommendations for improvement.

The committee is seeking a curriculum that will provide a better vocational education for the students of the district. The committee, which was formed last year, is currently reviewing the existing curriculum and making recommendations for improvement.

The committee is seeking a curriculum that will provide a better vocational education for the students of the district. The committee, which was formed last year, is currently reviewing the existing curriculum and making recommendations for improvement.

The committee is seeking a curriculum that will provide a better vocational education for the students of the district. The committee, which was formed last year, is currently reviewing the existing curriculum and making recommendations for improvement.

The committee is seeking a curriculum that will provide a better vocational education for the students of the district. The committee, which was formed last year, is currently reviewing the existing curriculum and making recommendations for improvement.

WEATHER

Forecast	High	Low
Today	68	48
Tomorrow	72	52
Wednesday	75	55
Thursday	78	58
Friday	80	60

The Chelsea Standard

ONE HUNDRED FOURTH YEAR—No. 2

14 Pages This Week

CHELSEA, MICHIGAN, THURSDAY, AUGUST 16, 1973

15c per copy

SUBSCRIPTION: \$4.00 PER YEAR

Grid Practice Will Start Next Monday

As everyone knows, the snap of steel and the smell of burning leather are no longer needed to proclaim the arrival of football season.

The varsity, junior varsity and freshman team members will kick off the season with a meeting at 7:30 p.m. Friday, Aug. 17, in the high school auditorium.

The following Monday, the varsity will leave at 8 a.m. for a YMCA camp near Lyndon where they will spend a week getting into shape. The junior varsity and freshman players will spend the week in similar exercise at the high school gym.

Added to the conditioning exercises will be drills to sharpen the boys' awareness of the intricacies of the game but there will be no "rough stuff." As set up by the Michigan High School Athletic Association, only helmets, shoes and footballs will be used.

By Sept. 7, the varsity will be ready for contact. The Bulldogs will travel to Michigan Center to take part with three other teams in the first scrimmage of the season. A week later they face their first league rival, Tecumseh, which finished 9-0 last year, one of the best teams in the state.

All players must pass a physical examination before they can participate in Chelsea's football program. They also must be equipped with a mouth guard. Impressions for the latter will be taken Aug. 29 at 1 p.m. in Dr. Gene Miller's office at Chelsea Medical Center. All high school and junior high players must be there at that time.

Junior High school football starts Sept. 6.

D. Feldkamp Hits Hole in One at Cascades Course

It's that moment every golfer waits for; it's a hole-in-one.

Dave Feldkamp's moment came last weekend when he got his first hole-in-one on the 16th hole at Cascades Golf Course in Jackson.

A member of the Boondocks course in Grass Lake, Feldkamp has been a golfer for 15 years. He was playing with Duke Weiss at the time.

Minixes Open Southern Boy Manor Motel

They started with the Southern Boy Take-Out store and gas station 10 years ago. Now Marge and Charles Minix have expanded their enterprise to include the Southern Boy Manor Motel.

The motel, the first in the area, stands next to the older Minix businesses on M-52, two miles south of Stockbridge. The grand opening will be Saturday, Aug. 18. Refreshments will be served from 1 to 6 p.m. and visitors will be given a tour of the complex.

The motel includes 10 efficiency apartments, each with two double beds, a davenport, TV and fully equipped kitchens. Thick red carpeting, drapes and multi-colored print bedspreads, black leatherette and walnut furnishing complete the decor.

Used Football Shoes Wanted By Team

In attempt to cut costs, Chelsea football players are looking for used football shoes.

Individuals with shoes that they wish to sell or donate to the team may call Coach Phil Bareis at 475-7531 or John Schaffner at 475-8802. The shoes will be picked up upon request.

Band Camp Departure Set For Sunday

Band Camp, a harbinger of fall, will take place this coming week at Camp Maplehurst, Kewadin, near Traverse City.

Students numbering near 150, a staff of seven and 12 chaperones will begin their duties by loading baggage and paraphernalia into buses at 6:30 Sunday morning.

After a protestant worship service in the high school auditorium at 7:30, the campers should be ready to roll at 8. Then follow six days of rehearsals and recreation.

Directing the activities will be Mr. and Mrs. Mel Leach, camp directors. They will be assisted by the chaperones Mr. and Mrs. Art Paul, Mr. and Mrs. Larry Gorton, Charles Wilkins, Mr. and Mrs. Art Stoll, Mrs. Paul Patrick, Mrs. Earl Kuhl and Andy Blackwell. Directing the band rehearsals, which will be held each morning and evening, will be Warren Meyer and Ronald Harris, band directors. They will also supervise sectional and individual rehearsals in the afternoon with the help of three university music students, Steve Weldon, Robert Wilson and Jim Galvic. Weldon and Wilson, Eastern Michigan students, will direct the woodwinds and low brass, respectively, while Galvic, of the University of Michigan, is in charge of percussion.

The majorettes will be drilled by Lynn Freeman of Ferris Institute. (Continued on page eight)

Open House To Honor Fred Prinzing's 85th

Fred Prinzing, who was 85 on Aug. 4, will be honored at an open house Aug. 19.

The festivities will be held at the home of his son, George, at 421 Chandler. No invitations are being mailed. The family would like friends and relatives to attend from 2 to 5 on Sunday, Aug. 19.



A PILE OF PROTEIN: It was not often this week that local grocers could look this optimistic about their meat supplies. Don Harr, Polly's new manager, is pictured here with an abundant supply of all-American hamburger, something he was unable to offer customers Monday. His meat counter

was practically bare before a shipment of two sides of beef arrived Tuesday. Jiffy Market and Schneider's also had difficulty providing meat. Imported hamburger, which is not subject to price commission price restrictions, could be found at those stores.

Beef Supplies Dwindle in Stores As Imported Meat Prices Soar

"The beef situation is lousy," says Gene Shoemaker. Nobody is arguing about that!

For at least two weeks now the consumer has watched the selection at meat counters dwindle until there is nary a steak or roast to be found. When the meager shipments do arrive, it is the early bird that gets the worm.

Of course there is a good supply of pork and chicken to be had if the shopper is willing to pay the price. The ceiling on those items was lifted July 13.

Gene Shoemaker, for one, is keeping poultry and pork stocks to a conservative minimum because he is finding that not everyone is willing to pay the price. "The public in general is holding back," he says. "Sales are slow."

There is a good supply of hamburger, too, but it isn't the economy food it once was. Why is it that everybody's budget meat, once 89 cents a pound (was it only two months ago?), now sells for \$1.49 at Schneider's? That hardly looks like a frozen price.

The answer is that all-American hamburger is imported from Australia. Being imported it is not subject to price commission regulations.

Gene Shoemaker, who makes a lot of noise about refusing to buy Canadian beef, justifies the 20 frozen blocks of Australian hamburger that arrived at Jiffy Market Tuesday by saying that his customers have to have some beef to tide them over to September.

Shoemaker explains, "I've been into Australian beef for some time." Grocers used to mix it with meat trimmings but now, with no sides of beef to trim, it is sold pure.

The Australian beef is the only meat Shoemaker admits to buying in the last few weeks.

What few cuts he displayed last week were the left overs from the sides of beef he purchased before the squeeze began. He cancelled an order for 20 more sides, he says, because "I can't afford to pay 75 cents a pound for live weight. The loss is too great." He believes, however, that the farmers deserve the price they are asking.

He says he was given the option to buy some of the Canadian meat that is tempting steak lovers at Wrigley stores, but he turned it down. "I won't do it. I don't believe the U. S. Government should allow Canadian meat to be sold here if the U. S. farmer still has a cattle to sell."

Even before Canada moved Tuesday to stop the flow of Canadian beef into the U. S., state-wide consumers were beginning to find the imports an inadequate solution to their meat planning problem. The prices were enough to ruin the thrifty shopper's appetite.

A list of suggested retail prices for imported beef shows New York strips selling for \$3.89 a pound. T-bone steaks are worth \$2.39 while a Canadian Porterhouse brings \$2.48.

Rolls of chuck roasts coming across the border can command \$1.89 a pound. Ground round is worth as much.

Polly's and Schneider's, like Jiffy, have stayed away from the Canadian imports, but unlike Jiffy, they have continued to buy midwestern beef, when they can. Both have found the supplies skimpy.

From behind Schneider's meat counter, Jeff Flintoft reports that it's a day-by-day situation that is unpredictable. For the last three weeks the store has purchased what it can but many popular cuts have been missing. Beef loin especially, the stuff steaks are made of, has been a rarity.

Polly's supply was down approximately 35 percent last week and became more scarce this week. Monday the delivery truck never showed and the display case was practically bare before a truck, Tuesday, brought relief in the form of one steer.

The two sides were cut and packaged and on display Tuesday afternoon giving shoppers a varied selection as long as it lasted. "It's a touch and go situation," says Don Harr, Polly's new manager.

steadily so the trickle of beef is not expected to dry up altogether.

While the housewife can use protein substitutes if she's creative, restaurants, especially those who have built a reputation on good meat, are in a particular bind. Fritz Schumm has kept his restaurant supplied by buying meat on the hoof at local fairs.

In the past, he has regularly purchased champions but now he says, "I buy anything I can." With that in mind he'll be bidding at the Manchester, Chelsea and Saline fairs just as he did at the Washtenaw County 4-H Livestock sale.

He has talked to other restaurants. (Continued on page eight)

Professional Acts Signed By Fair Board

Three Varied Acts To Appear On Stage for Final Evening

Several new events have been added to the traditional Chelsea Community Fair schedule this year. For the first time professional entertainers will headline the Saturday night show and licensed games of chance will be part of the fun and games Tuesday through Saturday.

To end the five-day Fair in a big way, the Fair Board has arranged for free entertainment at the grandstand at 8 and 10 p.m. Saturday night, Sept. 1. With a Chrysler flat truck for a stage, the daredevil Olmedas, the comedy team, Billy Bishop and Ann, Chris Anderson on the organ and the juggling Torino Brothers will perform.

The Olmedas, a family from Spain which has thrilled audiences on three continents, are known for their ability to perform balancing tricks while whirling around the stage on one-wheeled cycles.

The Torino Brothers also hail from a family of performers. Their roots rest in the circus world, having traveled under the big top for several years. They learned showmanship and the art of handling clubs, balls and rings at an early age. Their eye-catching assistant adds sparkle to the excitement.

A less strenuous portion of the show will be offered by Chris Anderson, a 17-year-old who is already a seasoned musician, singer and performer. Since the age of five he has been performing at the Hammond keyboard. A native of Kalamazoo, Chris blends the organ, his pleasant singing

voice and his phenomenal memory into a show that offers something for everyone's taste. His repertoire includes folk songs, roaring 20's show tunes, dance songs, popular and country and western songs.

Comedy is the forte of Billy Bishop and Ann. Bill manages to keep his tricks to a minimum, spicing the hocus pocus with chatter. He satirizes magicians with his old tricks and new twists.

Entertainment will by no means be restricted to Saturday night. The Chelsea Jaycees will be sponsoring licensed games of chance at their booth every night, 6 to midnight, Tuesday through Saturday. The proceeds will go toward community projects.

Another new attraction will go be the new cook, Mary "Red" Brough, who will be taking over from Pat and Bill Robbins who did the honors in the kitchen last year.

For those who are unable to take in the festivities at the fairgrounds Saturday, there is some small consolation. WPAG Radio will be broadcasting from the Fair and will devote its air time between 6:30 and 7 p.m., Sept. 1, to a recap of the Chelsea Fair Parade. The parade itself will occur from 1 to 2 p.m., Saturday.

For those who want an overview of the fair, the helicopter rides will once again be offered daily.

Anyway you look at it, the Chelsea Community Fair has something for everybody.



JUNIOR GOLF CHAMPS: A golf tournament for the younger set was concluded last week-end at the Inverness Golf Course with honors going to boys and girls in several age groups. Winners and runner-ups were in the front from left: Jeff Policht, winner in the 13-14 boys division; Mike Fouty, winner in the 15 and over boys division; Dan Shirrille, runner-up among the 13 and over boys; and Andy Rosum, runner-up among the 9- and 10-year-old boys.

In the back row are Jeff Klei, runner-up, 13- and 14-year-old boys; Sara Pullen, winner, 15 and up girls; Shella Tarasow, 11- and 12-year-old girls winner; Bill Spaulding, 11- and 12-year-old boys runner-up; and Bob Kruse, 9- and 10-year-old boys winner. Missing from the photo are Joe Ewald, 13- and 14-year-old boys winner and Molly Eisele, 11- and 12-year-old girls runner-up.



SLOW PITCH CHAMPS: Walt's Clippers, coming from the American League with a nearly flawless record, faced Rula Farms, Monday evening, to fight for the city title. Rula had finished National League play with a 5-5 record, which speaks for a well-balanced league. Rula was leading by one run in the bottom of the seventh but gave up the lead with a costly error before the final out was made.

In the inning of overtime, Walt's Clippers rallied with three runs to take the win, 6-3. The winners are in front, from left, Rodger Myers, Bob Vogel, George Stevens, Mike French, Stan Daily and Junior Williams; in back, Gary Cornish, Chris Collier, Cliff Bellers, Dan Wilson, Walt Prater, Brad Wilson, manager, and Dave Kerr. Randy Myers is missing from the photograph.

Boy Scouts Relive Jamboree Memories

The local Boy Scouts who attended the Boy Scout Jamboree in Pennsylvania last week returned Friday with a load of memories and souvenirs.

One memory Brad Myers, who attended with a Wolverine Council Provisional Troop along with his brother, Kirk, will cherish is the experience of witnessing a Buddhist service Sunday. The ceremony was given in English except for some of the chants. The boys were able to participate in the entire ritual, including the chanting of the sutra, because their programs were printed phonetically.

Brad, a Methodist, also attended an Episcopal service which was an "education." He reports that every kind of worship service was offered for the boys and that they were well attended.

The most sought after keepsakes that were collected during the week were the many patches, arm insignia and pocket flaps the boys exchanged. Patch trading was a "mid-night madness" that infected almost every scout for at least part of his visit, says Brad.

Each Order of the Arrow lodge and each council have their own unique decoration, some of which are restricted in number so that they are particularly valuable in the eyes of serious collectors.

Brad picked up a Canadian patch during the bargaining and Kirk, his younger brother, was able to negotiate a Philippine patch from one of the foreign troop representatives. Scouts came from India, Mexico, the Philippines and Japan for the event.

When patch trading wasn't commanding their attention, the boys camped, sailed, swam and went row boating, or they took part in the two separate skilloramas, showplaces for the boys' talents.

Brad reports that a Japanese troop taught bystanders how to use chop sticks as part of their exhibits. The Wolverine Council gave a cooking exhibition as their contribution to the skillorama.

An Arts and Science Expo and a Merit Badge Midway also were points of interest where boys could view the work of their contemporaries.

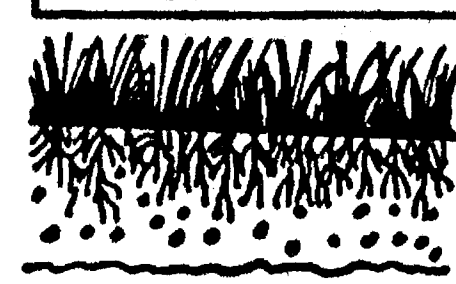
All the boys got home safely and must now wait another four years for the next Jamboree. Attending from Chelsea in addition to Brad and Kirk were members of Troop 476.

Three-Inch Rainfall Dumped in One Hour Thursday Afternoon

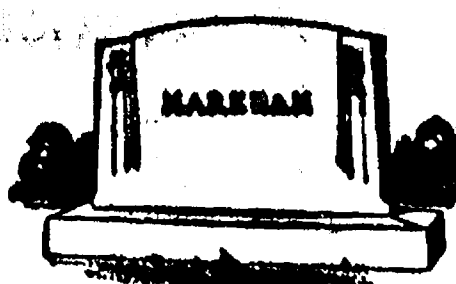
During a heavy rainstorm Thursday afternoon, three inches of rain fell on Chelsea within one hour. That was the heaviest downpour reported in the state.

The deluge washed out some gravel road shoulders and minor flooding was reported. Mill Creek rose four feet during the rain.

THIS WORLD OF OURS



One of nature's best healing agents for disturbed land is grass. The fibrous root system of grass builds topsoil as it binds the ground, preventing wash. Grass plants also absorb and hold nutrients.



MAUSOLEUMS ★ MONUMENTS
BRONZE TABLETS ★ MARKERS

BECKER MEMORIALS
6033 Jackson Road
ANN ARBOR, MICHIGAN

Chrysler Plans Addition to Scio Plant

Plans to add 100,000 square feet to the Chrysler Introl Division manufacturing plant in Scio township were announced Friday by E. Elmer Sivacek, Division general manager.

Sivacek, in making the announcement, said Chrysler has applied to Scio township officials for a building permit to start the expansion.

Contractor for the proposed building project is expected to be selected by early November.

The addition to the east end of the one and one-half story Scio facility will increase its total size to 435,000 square feet. Construction will begin in late November and will be completed in October 1974.

Sivacek said the addition will permit the Scio plant to expand its plastics manufacturing operation which supports Introl's extensive automotive instrument activity. Currently the Scio plant manufactures over 100,000 instrument gauges, speedometers, odometers, instrument panel clusters, and emission control components on a daily basis.

In addition to the Scio plant, Introl has a 127,000 square foot engineering and manufacturing facility in Ann Arbor.

WASH THIS PAINT RIGHT OUT OF YOUR HAIR!



Dutch Boy Latex SATIN GLOSS ENAMEL

- Clean up spills, spatters, brushes & rollers with soap and water.
- Flows on easily with roller or brush—no runs or sags.
- Fast, fast dry.
- Non-yellowing.
- Enamel-scrubbability.
- Odorless.
- Ideal for kitchens, bathrooms, cabinets, woodwork, and many more.

Ask us for Dutch Boy Latex Satin-Gloss Enamel today!



MERKEL BROS.
Phone 475-8821

What's Cooking In Michigan

By Larresidine Trimm
Michigan Dept. of Agriculture Marketing Information Specialist
Bell peppers have joined Michigan's parade of fresh vegetables as late summer harvesting continues throughout the state. Berrien, Van Buren, Monroe and Wayne counties are the primary sites for this colorful commercial crop. Michigan had a million dollar bell pepper crop in 1972 and placed sixth in the nation in total production, according to marketing officials of the Michigan Department of Agriculture.

You may be more familiar with bell peppers when called sweet green peppers or vegetable peppers. The terms are used interchangeably, depending upon what part of the country you're from. Bell peppers are a warm season crop, grown on well-drained mineral soil.

Quality peppers are medium to dark green in color with a glossy sheen, relatively heavy weight, with firm sides. Fully mature peppers of the same type are bright red in color. If unaccustomed to red bell peppers, you might imagine them to be hot but actually they're as sweet and mild as green peppers, though not available in all markets.

Need more vitamin C? Eat plenty of fresh peppers. Nutritionists say they're among the richest sources. Most frequent uses are raw and cooked minced in other foods to add color and flavor.

But you can stuff, bake or cut them into strips and pan fry. Peppers can also be frozen for winter use.

Wash peppers, remove seeds and chop to freeze for uncooked foods. Place in a plastic bag or freezer container, and seal. If freezing whole, halves, strips or rings, blanch first by placing in boiling water for a few minutes. Drain and cool before packing into freezer containers.

Try stuffing green peppers in the morning and allow them to set in the refrigerator for several hours while seasonings permeate the filling. For quick meals, steam peppers for 10 to 15 minutes and stuff with any hot creamed vegetable or meat dish. Sprinkle the top with grated cheese and paprika and heat in oven for 10 minutes.



CHELSEA FINANCE CORP.
\$25 to \$1,500
For Any
Worthwhile Purpose

See or Call
FRANK HILL
at 475-8631

111 PARK STREET
CHELSEA, MICH.

TYPIST NEEDED

Accurate, 65-80 wpm.
Position now open.

Learn a fascinating new skill in Teletypesetter perforator operation.

Apply in Person

The Chelsea Standard
300 N. Main St. Ph. 475-1371

Real Estate One.
WEED REALTY, INC., ASSOCIATES
REALTORS

475-8693

1196 M-52, CHELSEA

WE WANT TO DO BUSINESS WITH YOU!

... it's just that simple. Our SUCCESS in Real Estate sales in Washtenaw County has been no accident. We're successful because we have many satisfied customers, people just like you.

Ask our sellers! They know. We work hard for them, and we get results with PROFESSIONAL PERSONAL service.

Ask our buyers! They know, too. They buy through us with CONFIDENCE; their questions are answered and their problems are solved.

You see, we're SALESMEN and SALESWOMEN. And we know that's exactly what both our buyers and our sellers want. We're friendly, enthusiastic folks that you'll like doing business with.

Chelsea office coming soon!

the gillies co.

Realtors

761-6130

Jiffy market

Big Enough To

Serve You . . . Small Enough To Know You!

TOP VALUE STAMPS - GUARANTEED SATISFACTION - COURTEOUS SERVICE



Full Line Supermarket
BEER - WINE - LIQUOR
LOTTERY TICKETS
MARATHON GAS PUMPS
AUTHORIZED
FOOD STAMP STORE

Open 7 Days A Week
7 a.m. to 10 p.m.
Corner Sibley & Werkner Rds.
PHONE 475-1701

Sale Prices Effective
Thurs., Aug. 16 thru Sun., Aug. 19

RISDON'S HOMOGENIZED

LOW-FAT MILK . . . 87¢
gallon

COUNTRY FAIR

WHITE BREAD . . . 2 49¢
1-Lb., 4-Oz. Loaves

GLACIER CLUB

ICE CREAM 59¢
Assorted Flavors
Half Gallon

MICHIGAN U. S. No. 1 SUNNY CREST FARMS

POTATOES 8 89¢
Lb. Bag

ALL BRANDS & SIZES — CHECK OUR PRICES ANYWHERE!!

CIGARETTES \$3.38
Your Choice
Per Carton

Worth 100 EXTRA

This coupon good for 100 Free Top Value Stamps with any purchase at (STORE NAME) who gives Top Value Stamps. Coupon void after Aug. 19, 1973. Coupon void after Aug. 19, 1973.

Top Value Stamps

Limit one coupon to a customer per visit. (This offer void in any state or municipality where prohibited taxed or otherwise restricted.)

Sign Here _____ Street _____ Town _____

Mich. State Lottery Tickets - Fresh Meats - Produce - Groceries - Beer - Wine - Liquor

DEXTER ★ HIGH SCHOOL
SUNDAY 19 MATINEE ONLY
SHOW STARTS 3 P.M.
MIDWAY OPENS 2 P.M.
SPONSORED BY DEXTER JAYCEES



WORLD FAMOUS ARENIC STARS
WILD ANIMALS ELEPHANTS
AERIALISTS CLOWNS
ACRES OF TENTS

Buy tickets from any Dexter Jaycee member.
RESERVE SEATS 50¢ EXTRA

GRAND OPENING OPEN HOUSE SOUTHERN BOY MANOR MOTEL

13190 M-52, Stockbridge, Mich.
(2 miles south of Stockbridge)

SUNDAY, AUG. 19

from 1 p.m. to 6 p.m.

We wish to invite all our friends
and neighbors to stop in, have
refreshments and visit.

CHARLES & MARGE MINIX

13180 M-52, STOCKBRIDGE, MICH.

Tomatoes Plentiful in August

Michigan's production of tomatoes is expected to be one of the largest in the nation this year. The Michigan Department of Agriculture reports that the state's tomato crop is expected to reach 100 million pounds.

Tomatoes are a staple of the Michigan diet, and the state's production is expected to be one of the largest in the nation this year. The Michigan Department of Agriculture reports that the state's tomato crop is expected to reach 100 million pounds.

Tomatoes are a staple of the Michigan diet, and the state's production is expected to be one of the largest in the nation this year. The Michigan Department of Agriculture reports that the state's tomato crop is expected to reach 100 million pounds.

Tomatoes are a staple of the Michigan diet, and the state's production is expected to be one of the largest in the nation this year. The Michigan Department of Agriculture reports that the state's tomato crop is expected to reach 100 million pounds.

Tomatoes are a staple of the Michigan diet, and the state's production is expected to be one of the largest in the nation this year. The Michigan Department of Agriculture reports that the state's tomato crop is expected to reach 100 million pounds.

Tomatoes are a staple of the Michigan diet, and the state's production is expected to be one of the largest in the nation this year. The Michigan Department of Agriculture reports that the state's tomato crop is expected to reach 100 million pounds.

Tomatoes are a staple of the Michigan diet, and the state's production is expected to be one of the largest in the nation this year. The Michigan Department of Agriculture reports that the state's tomato crop is expected to reach 100 million pounds.

Tomatoes are a staple of the Michigan diet, and the state's production is expected to be one of the largest in the nation this year. The Michigan Department of Agriculture reports that the state's tomato crop is expected to reach 100 million pounds.

Tomatoes are a staple of the Michigan diet, and the state's production is expected to be one of the largest in the nation this year. The Michigan Department of Agriculture reports that the state's tomato crop is expected to reach 100 million pounds.

Tomatoes are a staple of the Michigan diet, and the state's production is expected to be one of the largest in the nation this year. The Michigan Department of Agriculture reports that the state's tomato crop is expected to reach 100 million pounds.

Tomatoes are a staple of the Michigan diet, and the state's production is expected to be one of the largest in the nation this year. The Michigan Department of Agriculture reports that the state's tomato crop is expected to reach 100 million pounds.

Tomatoes are a staple of the Michigan diet, and the state's production is expected to be one of the largest in the nation this year. The Michigan Department of Agriculture reports that the state's tomato crop is expected to reach 100 million pounds.

Tomatoes are a staple of the Michigan diet, and the state's production is expected to be one of the largest in the nation this year. The Michigan Department of Agriculture reports that the state's tomato crop is expected to reach 100 million pounds.

Tomatoes are a staple of the Michigan diet, and the state's production is expected to be one of the largest in the nation this year. The Michigan Department of Agriculture reports that the state's tomato crop is expected to reach 100 million pounds.

Tomatoes are a staple of the Michigan diet, and the state's production is expected to be one of the largest in the nation this year. The Michigan Department of Agriculture reports that the state's tomato crop is expected to reach 100 million pounds.

Tomatoes are a staple of the Michigan diet, and the state's production is expected to be one of the largest in the nation this year. The Michigan Department of Agriculture reports that the state's tomato crop is expected to reach 100 million pounds.

Tomatoes are a staple of the Michigan diet, and the state's production is expected to be one of the largest in the nation this year. The Michigan Department of Agriculture reports that the state's tomato crop is expected to reach 100 million pounds.

Tomatoes are a staple of the Michigan diet, and the state's production is expected to be one of the largest in the nation this year. The Michigan Department of Agriculture reports that the state's tomato crop is expected to reach 100 million pounds.

Tomatoes are a staple of the Michigan diet, and the state's production is expected to be one of the largest in the nation this year. The Michigan Department of Agriculture reports that the state's tomato crop is expected to reach 100 million pounds.

Tomatoes are a staple of the Michigan diet, and the state's production is expected to be one of the largest in the nation this year. The Michigan Department of Agriculture reports that the state's tomato crop is expected to reach 100 million pounds.

Tomatoes are a staple of the Michigan diet, and the state's production is expected to be one of the largest in the nation this year. The Michigan Department of Agriculture reports that the state's tomato crop is expected to reach 100 million pounds.

Tomatoes are a staple of the Michigan diet, and the state's production is expected to be one of the largest in the nation this year. The Michigan Department of Agriculture reports that the state's tomato crop is expected to reach 100 million pounds.

Tomatoes are a staple of the Michigan diet, and the state's production is expected to be one of the largest in the nation this year. The Michigan Department of Agriculture reports that the state's tomato crop is expected to reach 100 million pounds.

Tomatoes are a staple of the Michigan diet, and the state's production is expected to be one of the largest in the nation this year. The Michigan Department of Agriculture reports that the state's tomato crop is expected to reach 100 million pounds.

Tomatoes are a staple of the Michigan diet, and the state's production is expected to be one of the largest in the nation this year. The Michigan Department of Agriculture reports that the state's tomato crop is expected to reach 100 million pounds.

Tomatoes are a staple of the Michigan diet, and the state's production is expected to be one of the largest in the nation this year. The Michigan Department of Agriculture reports that the state's tomato crop is expected to reach 100 million pounds.

Tomatoes are a staple of the Michigan diet, and the state's production is expected to be one of the largest in the nation this year. The Michigan Department of Agriculture reports that the state's tomato crop is expected to reach 100 million pounds.

Tomatoes are a staple of the Michigan diet, and the state's production is expected to be one of the largest in the nation this year. The Michigan Department of Agriculture reports that the state's tomato crop is expected to reach 100 million pounds.

Tomatoes are a staple of the Michigan diet, and the state's production is expected to be one of the largest in the nation this year. The Michigan Department of Agriculture reports that the state's tomato crop is expected to reach 100 million pounds.

Tomatoes are a staple of the Michigan diet, and the state's production is expected to be one of the largest in the nation this year. The Michigan Department of Agriculture reports that the state's tomato crop is expected to reach 100 million pounds.

Tomatoes are a staple of the Michigan diet, and the state's production is expected to be one of the largest in the nation this year. The Michigan Department of Agriculture reports that the state's tomato crop is expected to reach 100 million pounds.

Tomatoes are a staple of the Michigan diet, and the state's production is expected to be one of the largest in the nation this year. The Michigan Department of Agriculture reports that the state's tomato crop is expected to reach 100 million pounds.

Tomatoes are a staple of the Michigan diet, and the state's production is expected to be one of the largest in the nation this year. The Michigan Department of Agriculture reports that the state's tomato crop is expected to reach 100 million pounds.

Tomatoes are a staple of the Michigan diet, and the state's production is expected to be one of the largest in the nation this year. The Michigan Department of Agriculture reports that the state's tomato crop is expected to reach 100 million pounds.

Tomatoes are a staple of the Michigan diet, and the state's production is expected to be one of the largest in the nation this year. The Michigan Department of Agriculture reports that the state's tomato crop is expected to reach 100 million pounds.

Tomatoes are a staple of the Michigan diet, and the state's production is expected to be one of the largest in the nation this year. The Michigan Department of Agriculture reports that the state's tomato crop is expected to reach 100 million pounds.

Tomatoes are a staple of the Michigan diet, and the state's production is expected to be one of the largest in the nation this year. The Michigan Department of Agriculture reports that the state's tomato crop is expected to reach 100 million pounds.

Tomatoes are a staple of the Michigan diet, and the state's production is expected to be one of the largest in the nation this year. The Michigan Department of Agriculture reports that the state's tomato crop is expected to reach 100 million pounds.

Tomatoes are a staple of the Michigan diet, and the state's production is expected to be one of the largest in the nation this year. The Michigan Department of Agriculture reports that the state's tomato crop is expected to reach 100 million pounds.

Tomatoes are a staple of the Michigan diet, and the state's production is expected to be one of the largest in the nation this year. The Michigan Department of Agriculture reports that the state's tomato crop is expected to reach 100 million pounds.

Tomatoes are a staple of the Michigan diet, and the state's production is expected to be one of the largest in the nation this year. The Michigan Department of Agriculture reports that the state's tomato crop is expected to reach 100 million pounds.

Tomatoes are a staple of the Michigan diet, and the state's production is expected to be one of the largest in the nation this year. The Michigan Department of Agriculture reports that the state's tomato crop is expected to reach 100 million pounds.

THE LANSING REPORT

GIL BURSLEY

Appropriation Bills Lag

What happens when a new fiscal year starts and appropriations bills haven't passed? House members don't want to a spending bill. Senate don't close. Senate members don't find their checks stopped.

Because of action taken by the Senate last week, followed by House approval, agencies of government were given authority to continue operating at their present levels until the 1973-74 budget package is finally approved.

When that final approval comes, it will depend upon developments next week when, it is hoped, all differences on budget bills between the Senate and the House of Representatives will be resolved and the legislature can go into recess until next fall.

A combination of things—but primarily prolonged discussion in the House of Representatives over a school aid formula—can be blamed for failure to meet the June 30 fiscal year-end deadline.

The House spent weeks waiting for the leadership to put together an alternative school aid formula to the Senate-passed Bursley formula. After several false starts and a threat of Speaker William Ryan to resign if he couldn't have his way, the House passed the costly plan. Attempts will be made now to reconcile the Senate and House differences. If that fails, the present school aid formula will automatically continue.

At present, July 13 is the tentative target date for a summer recess but that will probably be extended another week or so.

Michigan Agriculture Products Hit \$1 Billion

A billion dollars is a lot of money in any man's language—but that's the value placed on the products brought forth by Michigan farmers last year.

If you add the costs of transportation, processing and marketing of those farm products, you will find the value of Michigan's agricultural industry last year was almost \$3.6 billion—a right smart sum for a state that is usually thought of being more industrial than agricultural.

That makes agriculture Michigan's second largest industry, next to manufacturing and it provides about 27 percent of all Michigan residents with some part of their income.

This information comes from an attractive and fascinating little booklet entitled "1973 Michigan Food Facts" put out just recently by the Michigan Department of Agriculture.

If you haven't followed Michigan farming particularly close, you may be interested to know that Michigan leads the United States in production of six crops, and is fifth or higher in 17 other food crops.

For an industrial state, that is a rather notable accomplishment.



GIL BURSLEY

Appropriation Bills Lag

What happens when a new fiscal year starts and appropriations bills haven't passed? House members don't want to a spending bill. Senate don't close. Senate members don't find their checks stopped.

Because of action taken by the Senate last week, followed by House approval, agencies of government were given authority to continue operating at their present levels until the 1973-74 budget package is finally approved.

When that final approval comes, it will depend upon developments next week when, it is hoped, all differences on budget bills between the Senate and the House of Representatives will be resolved and the legislature can go into recess until next fall.

A combination of things—but primarily prolonged discussion in the House of Representatives over a school aid formula—can be blamed for failure to meet the June 30 fiscal year-end deadline.

The House spent weeks waiting for the leadership to put together an alternative school aid formula to the Senate-passed Bursley formula. After several false starts and a threat of Speaker William Ryan to resign if he couldn't have his way, the House passed the costly plan. Attempts will be made now to reconcile the Senate and House differences. If that fails, the present school aid formula will automatically continue.

At present, July 13 is the tentative target date for a summer recess but that will probably be extended another week or so.

Michigan Agriculture Products Hit \$1 Billion

A billion dollars is a lot of money in any man's language—but that's the value placed on the products brought forth by Michigan farmers last year.

If you add the costs of transportation, processing and marketing of those farm products, you will find the value of Michigan's agricultural industry last year was almost \$3.6 billion—a right smart sum for a state that is usually thought of being more industrial than agricultural.

That makes agriculture Michigan's second largest industry, next to manufacturing and it provides about 27 percent of all Michigan residents with some part of their income.

This information comes from an attractive and fascinating little booklet entitled "1973 Michigan Food Facts" put out just recently by the Michigan Department of Agriculture.

If you haven't followed Michigan farming particularly close, you may be interested to know that Michigan leads the United States in production of six crops, and is fifth or higher in 17 other food crops.

For an industrial state, that is a rather notable accomplishment.

District Court Proceedings

Week of Aug. 7-13

In 14th District Court during the week of Aug. 7-13, Daniel L. Osburn was sentenced to \$75 fines and costs for reckless driving. He was also directed to pay \$45 restitution to the village of Manchester.

James Zella was sentenced to two years probation and fines and costs amounting to \$300 for driving under the influence of liquor.

Robert Patrick will be sentenced Oct. 1 for assault and battery. He was referred to probation.

Walter Lee Weeks pled guilty to drunk and disorderly conduct. His fines and costs were \$50.

Allan Harper was sentenced to \$100 fines and costs and 15 days in jail for possession of marijuana.

Delmus D. McDaniel pled guilty to an amended charge of impaired driving and was sentenced to fines and costs of \$200 or 30 days in jail.

David Fowler pled guilty to speeding at 42 mph in a 25 mph speed zone. He was fined \$25.

Peter J. Fuerstler pled guilty to driving at 63 mph in a 35 mph speed zone. His fines and costs were \$57.

Ronald Cummings pled guilty to speeding at 65 mph in a 35 mph speed zone. His fines and costs were \$51.

Maurice Haas was found guilty of driving under the influence of liquor. His sentence was \$200 fines and costs plus suspension of his license.

David Miller was fined \$50 fines and costs for reckless driving. Charles Hodge Jr. and James J. Riley pled guilty to an amended charge of tampering with a motor vehicle. They were referred to probation and will be sentenced Sept. 26.

Brian Hardwick was fined \$50 fines and costs for reckless operation of a boat.

David F. Rowe pled guilty to driving under the influence of liquor. His fines and costs must be paid by Aug. 16.

Huey Scott pled guilty to drunk and disorderly conduct. His sentence was to pay \$50 fines and costs.

Michael O'Doherty paid \$32 fines and costs for traveling at 53 mph in a 35 mph speed zone.

Jerry Abers pled guilty to driving at 69 mph in a 50 mph speed zone. His fines and costs were \$29.

Harold Kovell pled guilty to speeding and paid \$27 fines and costs.

Thomas Morrison will be sentenced Sept. 28 for driving under the influence of liquor and for driving with a suspended license.

David Chartand pled guilty to speeding at 35 mph in a 25 mph speed zone. His fines and costs were \$21.

Donald Riggs pled guilty to a charge of larceny under \$100. He will be sentenced Aug. 24.

Michael E. Hewett pled guilty to a charge of drunk and disorderly conduct. His fines and costs, amounting to \$50, were to be paid by Aug. 10.

David Ata pled guilty to illegal fishing. He was fined \$17 fines and costs plus \$15 restitution.

Grace Kring pled guilty to driving at 45 mph in a 25 mph speed zone. Her fines and costs amounted to \$27.

American Viewpoints

"To be prepared for war is one of the most effective means of preserving peace."

—George Washington 1732-1799

AGRICULTURE IN ACTION

By Michigan Farm Bureau Staff Writer

★ Udder Uncola Now in Short Supply . . .

"Try the udder uncola—drink milk," a large billboard proclaimed. This is one of the methods milk and dairy promoters have used to increase the consumption of nature's most nearly perfect food in order to help bring down the surplus that had built up due to overproduction and lower usage.

Now things have changed. Consumption of dairy products is up and it's become a problem to get enough produced.

U. S. milk production in the first five months of this year was down two percent from the same period last year. This was the first drop in production in four years.

Another significant drop in the second half of this year could put the dairy output considerably below present demand for milk and dairy products, and hence bring on some shortages.

The problem faced by dairymen is the same faced by other agricultural producers. Their costs have increased faster than their income, and an alarming number are discouraged to the point of calling it quits. The favorable beef price encourages farmers to cull their herds closely. That means a cow not paying her way through milk is sold for beef.

For a dairyman to earn an average living wage, he has to risk approximately \$200,000 and work at least 60 hours a week. This huge investment is in land, buildings, equipment and cattle. It does not include his home, or personal living items such as the family car. What is a little disconcerting is that most factory workers can earn more in a 40-hour week with no investment whatsoever.

It's no wonder some dairy farmers are selling out. They can put their investment in a savings account and make more on the interest than they can by milking cows twice a day, 365 days a year.

If consumers put the "udder uncola" in their shopping carts and complain about its price tag, it's because they don't realize the investment and effort it took to put it in the dairy case. Politicians find it hard to tell consumers the unvarnished truth and make promises they can't fulfill about lowering food prices. Farmers believe they should be told the facts—that the days of cheap food are over. They believe consumers will understand that nobody is willing to invest 10 cents to produce something the government says he must sell for a nickel.

Timothy Wade pled guilty to making a disturbance with squealing tires. His fines and costs were \$16.

Paul M. Taggart was fined \$200 fines and costs for fleeing a police officer.

Kenneth Nordin pled guilty to allowing his dog to run at large and paid \$16 fines and costs.

THE PERFECT BIRTHDAY GIFT

Give a dinner to celebrate the next special birthday on your list. Plan the menu around the person's favorite meat dish, be it T-bone steak, veal parmesan or beef stroganoff. Be sure to check the recipe carefully in order to select the proper cut of meat for the most delicious present of the year.

WHAT SHALL I SAY ABOUT THE TWO PERONIDE BLONDES WHO MADE SUCH A FUZZ AT THE GAME LAST NIGHT?

WHY JUST SAY THAT THE BLEACHERS WENT WILD?

RAMADA DOWNTOWN INN

CORNER OF FOURTH AND HURON
ANN ARBOR, MICHIGAN 48106
AREA CODE 313 769-5200
UNIQUE PEOPLE MAKE THE DIFFERENCE

Now Appearing:
AL SINGLETON
at the piano.

Think About Us for High Quality TIRES at DISCOUNT PRICES

Ask about our Free Replacement Guarantee

Little Profit!

The Little Profit saves you more than anything you ever bargained for

222 S. MAIN ST.
Since April, 1912

475 - 1301

Top of the Ram supper club

Dining and Dancing
Live entertainment Tuesday - Saturday
Spectacular view from the 11th floor
Located in the heart of Ann Arbor

RAMADA DOWNTOWN INN

CORNER OF FOURTH AND HURON
ANN ARBOR, MICHIGAN 48106
AREA CODE 313 769-5200
UNIQUE PEOPLE MAKE THE DIFFERENCE

Now Appearing:
AL SINGLETON
at the piano.

Think About Us for High Quality TIRES at DISCOUNT PRICES

Ask about our Free Replacement Guarantee

Little Profit!

The Little Profit saves you more than anything you ever bargained for

222 S. MAIN ST.
Since April, 1912

475 - 1301

Top of the Ram supper club

Dining and Dancing
Live entertainment Tuesday - Saturday
Spectacular view from the 11th floor
Located in the heart of Ann Arbor

RAMADA DOWNTOWN INN

CORNER OF FOURTH AND HURON
ANN ARBOR, MICHIGAN 48106
AREA CODE 313 769-5200
UNIQUE PEOPLE MAKE THE DIFFERENCE

Now Appearing:
AL SINGLETON
at the piano.

Think About Us for High Quality TIRES at DISCOUNT PRICES

Ask about our Free Replacement Guarantee

Little Profit!

The Little Profit saves you more than anything you ever bargained for

222 S. MAIN ST.
Since April, 1912

475 - 1301

Top of the Ram supper club

Dining and Dancing
Live entertainment Tuesday - Saturday
Spectacular view from the 11th floor
Located in the heart of Ann Arbor

RAMADA DOWNTOWN INN

CORNER OF FOURTH AND HURON
ANN ARBOR, MICHIGAN 48106
AREA CODE 313 769-5200
UNIQUE PEOPLE MAKE THE DIFFERENCE

Now Appearing:
AL SINGLETON
at the piano.

Think About Us for High Quality TIRES at DISCOUNT PRICES

Ask about our Free Replacement Guarantee

Little Profit!

The Little Profit saves you more than anything you ever bargained for

222 S. MAIN ST.
Since April, 1912

475 - 1301

Top of the Ram supper club

Dining and Dancing
Live entertainment Tuesday - Saturday
Spectacular view from the 11th floor
Located in the heart of Ann Arbor

RAMADA DOWNTOWN INN

CORNER OF FOURTH AND HURON
ANN ARBOR, MICHIGAN 48106
AREA CODE 313 769-5200
UNIQUE PEOPLE MAKE THE DIFFERENCE

Now Appearing:
AL SINGLETON
at the piano.

Think About Us for High Quality TIRES at DISCOUNT PRICES

Ask about our Free Replacement Guarantee

Little Profit!

The Little Profit saves you more than anything you ever bargained for

222 S. MAIN ST.
Since April, 1912

475 - 1301

Top of the Ram supper club

Dining and Dancing
Live entertainment Tuesday - Saturday
Spectacular view from the 11th floor
Located in the heart of Ann Arbor

RAMADA DOWNTOWN INN

CORNER OF FOURTH AND HURON
ANN ARBOR, MICHIGAN 48106
AREA CODE 313 769-5200
UNIQUE PEOPLE MAKE THE DIFFERENCE

Now Appearing:
AL SINGLETON
at the piano.

Think About Us for High Quality TIRES at DISCOUNT PRICES

Ask about our Free Replacement Guarantee

Little Profit!

The Little Profit saves you more than anything you ever bargained for

222 S. MAIN ST.
Since April, 1912

475 - 1301



BEAUTY IN HAND These Youth League bowlers, from left, Bob Freeman, Tim Greenleaf, Mark McManis, John Howe and Danny Alper, received their state championship trophies last week-end while attending the 10th annual "Parade of Champions" at the Warren Chateau in Warren. The boys and their parents were among the participants from all over the state to take part in the awards presentation given by the Youth Bowling Association.

LIFE OF JUPITER?

Jupiter's atmosphere contains ammonia, methane, hydrogen, and probably water, the same ingredients that may have produced life on earth about four billion years ago. Many scientists believe that large regions below the frigid cloud layer may be at room temperature. These conditions could allow the planet to produce living organisms.

EARLY COOKING

All food preparation, done 1,000 years ago or yesterday, consists of the same basic operations: heating, chilling, cutting, mixing, separation, retrieving and turning, measuring, forming and brewing. Almost all kitchen utensils perform one or another of these functions despite the great variety of their forms.

Babe Ruth Team 4 Wins Three Games

On Aug. 2, Jaycee Babe Ruth team No. 4 defeated team 1 with a score of 14 to 1 in five innings of play.

The winning pitcher was Don Morrison who allowed just two hits. The team hitting was led by Brad Glazier, Bob Sawyer and Don Nadeau. Each had three hits with three times at bats. Two of Don Nadeau's hits were long doubles.

Don Nadeau, Brad Glazier and Bob Sawyer also led the team in runs batted in. They collected three each.

Of the team's 28 stolen bases, Matt Heydlauff led the team with four in four attempts. Nine different players scored runs to contribute to the 14 runs scored.

Saturday, Aug. 4, Jaycee Babe Ruth team No. 4 won two games. The first game was won by a forfeit. The second game, involving team No. 1 was an exciting, close game with the Jaycee team No. 4 winning by a final score of 8 to 5.

The skills of getting hits with men on base, aggressive base running, and outstanding defensive plays enabled the Jaycee team to obtain the final score.

The sacrifice bunt or fly used three times, and base stealing, 15 times, were important factors in the game. Ernie Hadley led the team in runs batted in. He had four while Don Nadeau had two runs batted in.

Eight different team members stole bases for the victory. Brad Glazier stole four bases and Matt Heydlauff swiped three.

The fielding plays kept the score close throughout the game. The Jaycee team's infield displayed their skills and accounted for one-third of the team's put-outs during the game.

The outstanding defensive play was a running catch by Phil Frame with a man on third base and another man on second and two outs. Both men were moving on the play.

If you are using sheer fabrics for spring fashions, here's a tip: since sheer fabrics often ravel, French seams or small double double stitched seams are best.

Most girls hitch their wagon to a man who works like a horse.

Clippers, IPSCO Win In Slow Pitch Games

Slow Pitch League competition resumed Aug. 2 after being rained out July 31. Two uppen games boosted Walt's Clippers and IPSCO in the standings.

The Clippers faced Village Motor Sales in the first game of the evening and flattened them, 17-6. The five-inning game gave C. Bellers an opportunity for a home run as losing pitcher Kiel gave up 19 hits. Cornish, pitching for Clippers, let eight hits go by.

IPSCO was similarly successful with J. Phillips on the mound. With home runs from D. Brooks and J. Messer, IPSCO rolled over Chelsea Methodist Home, 15-3. Slugging homers for the Home were R. McCalla and H. McCalla while F. Wier pitched.

Top 10 Batting Averages (20 or more at Bats) As of Aug. 2

Colliers (Clippers)	783
Shively (Rockwell)	651
R. O. Myers (Clippers)	559
Collins (Rockwell)	553
Pasquantonio (Village Mot.)	530
Kaiser (Meth. Church)	518
Gieske (Meth. Church)	516
K. MacColman (Mark IV)	500
Hacker (Mark IV)	500
Graflund (Rockwell)	500

In 1972 alone, the production of plastics climbed 19.7 percent.

THIS WORLD OF OURS



The pest population is up. The California Department of Agriculture identified 39,201 insect specimens from throughout the state during 1970 - a 17 percent increase over 1969. Insect and mite pests caused an estimated \$281 million in crop losses last year. Structural pests cost California an estimated \$118 million in structural repairs, control work and inspections.

Slow Pitch Softball As of Aug. 2

AMERICAN LEAGUE	
Walt's Clippers	8 1
IPSCO	7 2
Rockwell International	4 4
Lanewood	2 6

NATIONAL LEAGUE	
Rulea Farms	4 4
Mark IV	3 5
Village Motor Sales	3 6
Methodist Church	3 6

BE CAREFUL!

That gorgeous blonde has something that'll knock your eye out: Her husband's list.

Jaycee Babe Ruth Team No. 4 Wins 4 of 5 at Close of Season

The Jaycee team made a great recovery and finished second behind Murphy's in the Babe Ruth league last week. After losing four out of the first six games, the team gained poise and won the next four out of five games, outscoring opposing teams by 55 runs to 19.

The success of the team is due to the contributions of every player. The many hours spent practicing culminated in a three-game winning streak that closed the season with a bang.

Brad Glazier and Mike Tobin finished the 11-game season with batting averages of .500 while five other ball players, Bob Sawyer, Don Morrison, Matt Heydlauff, Ernie Hadley and John Daniels, had averages over .300.

Relentless running exercises paid off with 15 players stealing a total of 144 bases. Seven players stole more than 10 bases

while one individual stole 32 bases for the season. Every team member batted in at least one run during the season.

The Jaycees' defensive ability kept the games close. The pitching staff was more than capable, averaging better than one strikeout an inning. The team catchers also displayed their abilities by giving up only 49 stolen bases, as compared to the Jaycee team total of 144 thefts. The catchers contributed to the team put-outs by averaging better than one assist or successful put-out every inning.

It is the total team effort, says the coach Dick Lapinowski, that makes a team a winner. He says, "This team of athletes worked together as one team. They never quit or considered defeat until the final out was made. They exhibited fine sportsmanship during and after the games. Coaching

Thought For Food

When you buy meat, check the price per serving rather than the price per pound. If the cut is boned, you have less waste, more servings.

In a recipe, for a cup of corn syrup, you can substitute a cup of sugar plus a fourth cup of water.

In a recipe, for an ounce square of chocolate, you can substitute three tablespoons cocoa plus a tablespoon of fat.

these guys was enjoyable and I look forward to coaching again."

The Jaycee's team success was well noted. Nine players, Tom Ball, John Daniels, Brad Glazier, Ernie Hadley, Matt Heydlauff, Don Morrison, Don Nadeau, Bob Sawyer, and Mike Tobin, were selected to play in the City Babe Ruth All Star game. They face Murphy's Monday and won.

REAL ESTATE ADVICE

RESIDENTIAL PROPERTIES
COMMERCIAL - INDUSTRIAL
FARMS
VACANT LANDS

SPEAR & ASSOCIATES, INC.

REALTORS
122 W. Main, Manchester Ph. 428-9388

MARIA LEHR
428-8182

Have Lunch Today
at the
MARK IV LOUNGE
PLEASANT - AIR-CONDITIONED
ADULTS

BOWLERS
Round-Up Time
For Fall Leagues
Now Starting

18 Astroline Lanes - Billiards & Air Hockey

MICHIGAN STATE LOTTERY TICKET AGENT

CHELSEA LANES, Inc.

PHONE 475-8141

1189 M-52

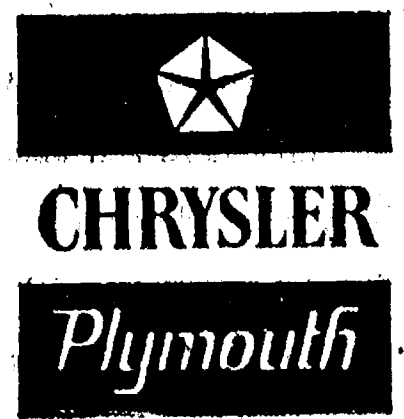
CHELSEA



'73 Chrysler:
Beautiful and even
more affordable at
our year-end
prices.

From the beginning, Chrysler has been acclaimed for its engineering... its performance... its roominess and elegance. A heritage of greatness, summed up in the 1973 Chrysler. Compare it with any other car—for room, comfort and ride. Compare it for overall value: Chrysler offers electronic ignition as standard. Something else to consider: Chrysler runs on regular gas. And now, at year-end prices, Chrysler is more affordable than ever. There's never been a better time to move up to Chrysler. So see us now.

Your next car
could be a
Chrysler.
Very easily.



AUTHORIZED DEALERS **CHRYSLER**
MOTORS CORPORATION

VILLAGE MOTOR SALES, INC.
1185 MANCHESTER ROAD
CHELSEA, MICHIGAN

Americans, Are You Bugged By It All?
Rediscover the America of...

- ★ Anne Hutchinson
- ★ Roger Williams
- ★ Malcolm X
- ★ North American Indians
- ★ Immigrants
- ★ The Slave Revolt

How did these Americans cope?

Forget John Wayne - See the **REAL WEST.**

Relive history through films, documents,
and readings

at

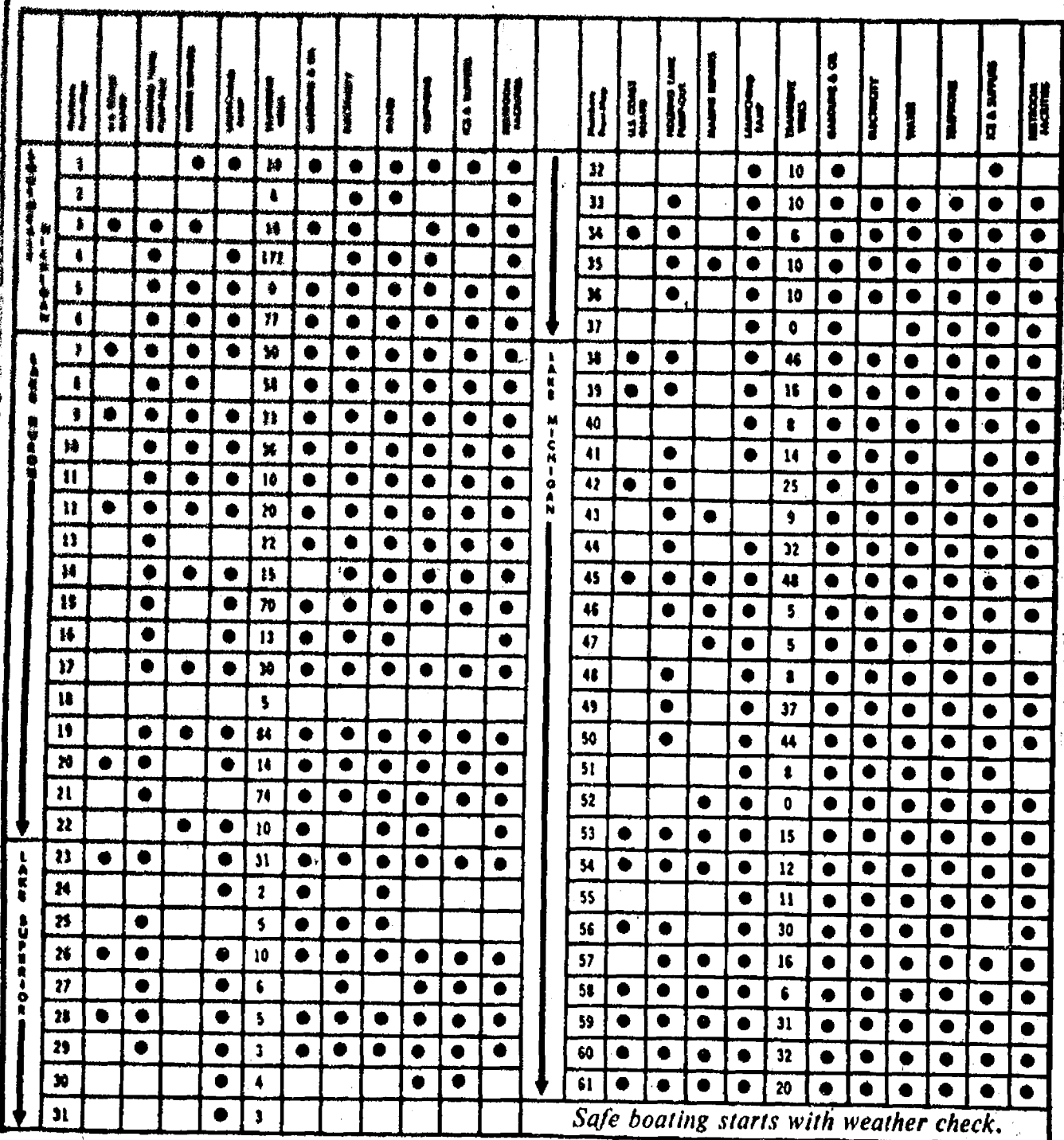
WASHTENAW COMMUNITY COLLEGE

Enroll this fall: U. S. History to 1865
3 credit hours

Instructor: Flavia Pierce
Cost: \$37.50 (In-district)

Offered: Mon. - Wed. - Fridays 1-2 p.m.
Mon. & Wed. 5:30-7:00 p.m.

Call 971-6300, Ext. 402 for further information.

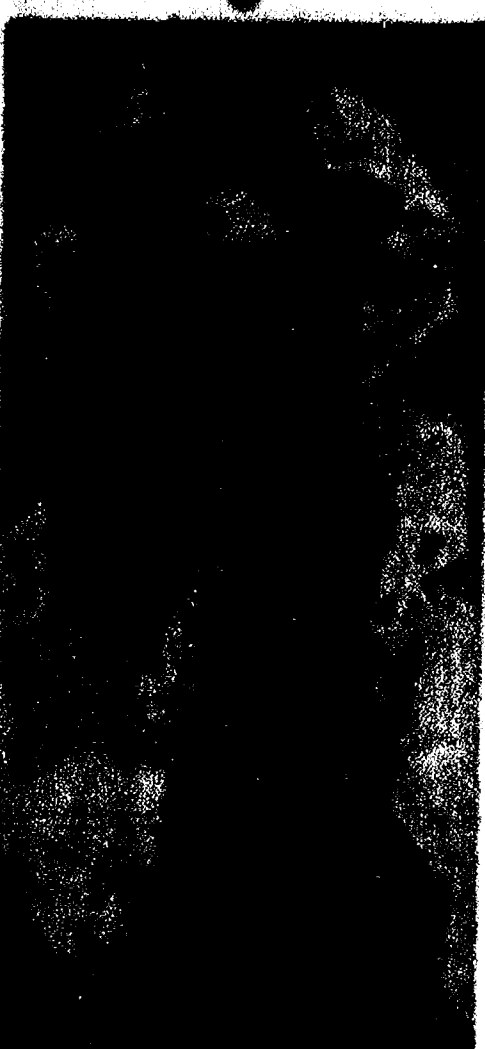


Let us provide you with the very finest printed or engraved invitations and announcements. Make certain that your wedding stationery is of top quality and conforms to correct social requirements. We can advise you on these important details.

8071 MAIN ST., DEXTER PHONE 426-3877

social printing.

Kathy Ann Leach, T. G. Horat, Jr., Exchange Vows Friday Evening



Miss Kathy Ann Leach, of 40 Cavanaugh Lake, was the bride of Theodore G. Horat, Jr., Friday evening at the First Congregational church with the Rev. Paul Schumann officiating.

After a wedding trip to Jamaica, the newlyweds will make their home in the Maple Village Apartments in Saline. They are the children of Mr. and Mrs. Melvin Leach of 40 Cavanaugh Lake and Mrs. Theodore G. Horat, Sr. of 40215.

The bride chose an ivory crepe, lace-trimmed gown, fastened with a large brooch and an antique lace bodice. Her headpiece was a short mantilla trimmed with matching lace. A colonial bouquet of white rose buds, stephanotis and baby's breath completed the ensemble.

She was attended by her sisters, Miss Karen Sue Leach, the maid of honor, Miss Cynthia L. Leach and Miss Susan M. Leach. The latter was also the soloist during the ceremony singing "Sunrise Sunset" from the musical "Fiddler on the Roof."

The attendants all wore colonial gowns with green print skirts and ivory bodices. They carried yellow daisies and baby's breath.

The bridegroom asked Larry Monaghan of Ypsilanti to be the best man. Other members of the wedding party were the ushers Russell Young of Ypsilanti and Johnny Young of Sumter.

After the ceremony, the couple greeted guests at the Chelsea Rod and Gun Club while the bride's aunt, Martha Villhaur of Toledo poured coffee and Miss Vicki Horat, sister of the bridegroom, poured the punch. Mrs. Merle Leach, the bride's aunt, cut the cake. Miss Karen Milliken was in charge of the guest book.

Area Students Named To Dean's Honor List At Kalamazoo College

Michael Hergert, son of Mr. and Mrs. Harvey Hergert, of South Lake Rd., Grass Lake, and Mark, Michael and Steve Thomson, sons of Mr. and Mrs. John Thomson, formerly of Chelsea, have been named to the Dean's List for the spring quarter at Kalamazoo College.

Of the 218 named, 90 students completed the quarter with a point average of 3.75 or better to receive high honors. Michael Hergert was among those. The Thomson boys had grade point averages between 3.5 and 3.75.

LOSE UGLY FAT OR PAY NOTHING

Start losing weight today OR MONEY BACK. MONDEX is a tiny tablet that will help curb your desire for excess food. Eat less, weigh less. Contains no dangerous drugs and will not make you nervous. No strenuous exercise. Change your life. Start today. MONDEX costs \$3.00 for a 30 day supply and \$5.00 for twice the amount. Loss up to 10 lbs. or more money will be refunded with no questions asked by.

Chelsea - Mail Orders Filled
CHELSEA DRUG STORE

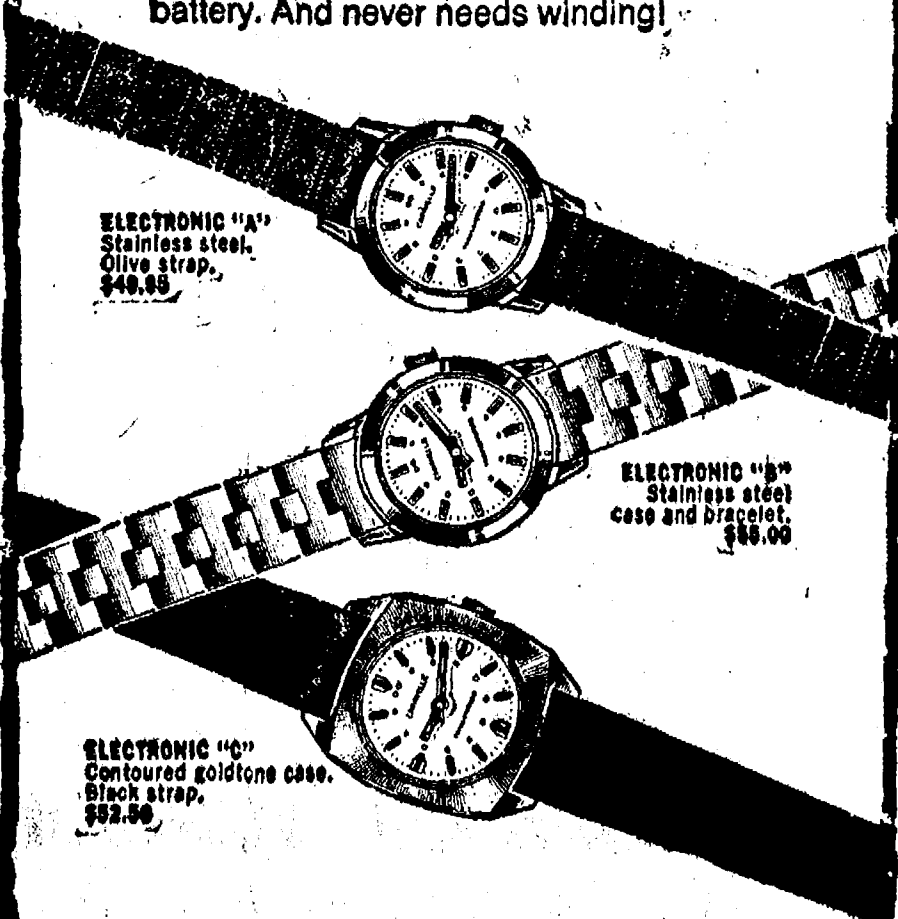
VILLAGE BEAUTY SALON

LORETTA
CHERYL - JANICE - CAROL - SUE
107 N. MAIN PHONE 475-1671

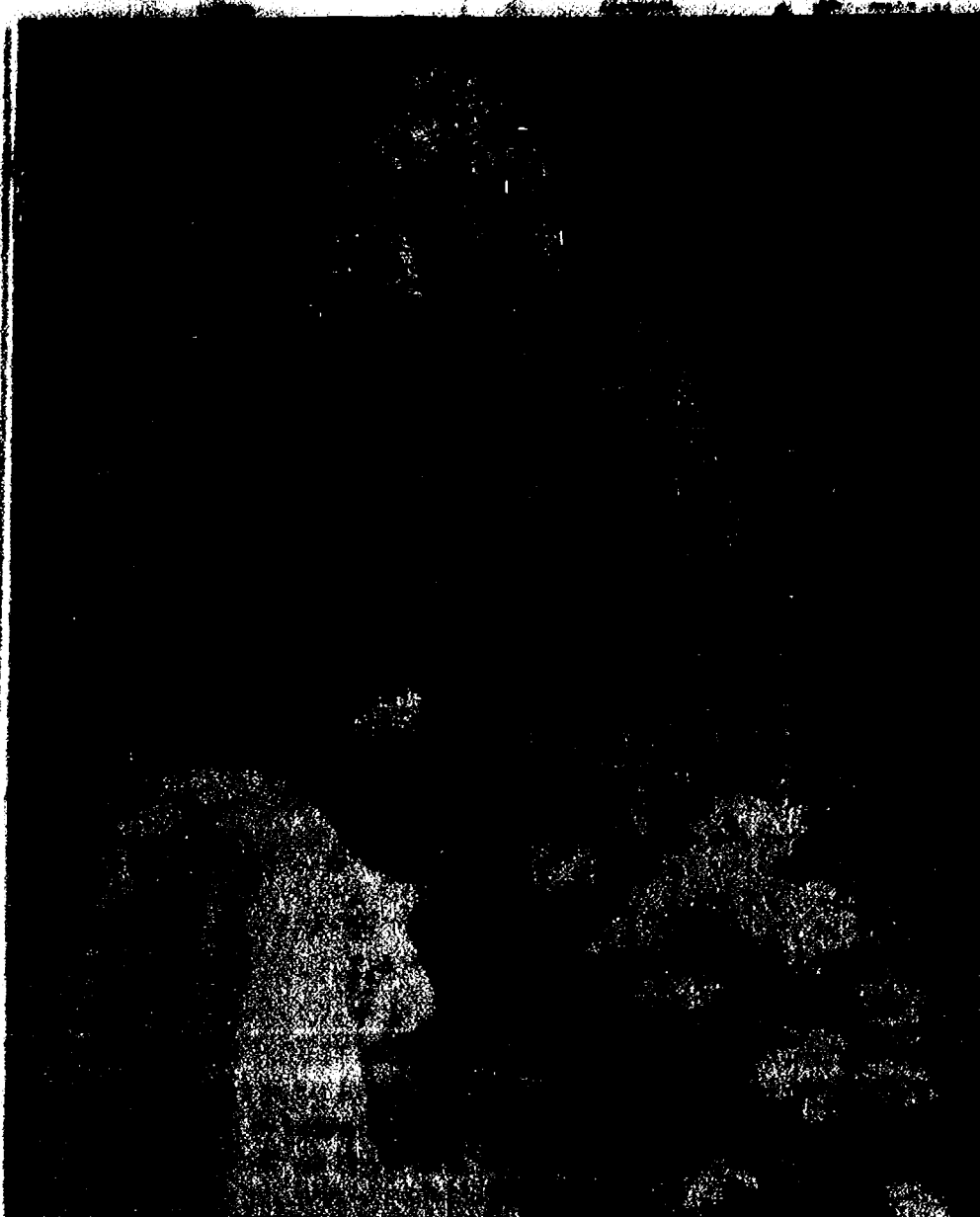
OPEN TUESDAY THRU SATURDAY
Evenings By Appointment

the new CARAVELLE® Electronic for Women BY BULOVA

It takes a fully electronic watch to keep pace with her new life style. A watch that goes wherever she goes, good looking and trouble free. She can depend on her Caravelle Electronic by Bulova because it depends on a reliable little transistor, an ingenious bit of electronic circuitry and a tiny long-life battery. And never needs winding!



WINANS JEWELRY



Mrs. Gary Alan Bauer

Vicki Jean McInnis, Gary Bauer Speak Wedding Vows Saturday

After a wedding trip to the eastern shores of Lake Michigan, Mr. and Mrs. Gary Alan Bauer will settle at 533 N. Main St., Chelsea. The two graduates of Dexter High school were married Saturday afternoon.

Vicki Jean McInnis, daughter of Mr. and Mrs. Robert McInnis of 20920 Waterloo Rd., exchanged vows with the son of Mr. and Mrs. Walter Bauer of 8735 Jackson Rd., Dexter, at 1 p.m. in Chelsea Kingdom Hall of Jehovah's Witnesses.

Approximately 200 guests were present to witness James L. Bauer, a representative of Watchtower, Bible and Tract Society of Brooklyn, N. Y., conduct the ceremony.

The bride was dressed in a white, floor-length taffeta gown fashioned with a flowing white overskirt ruffled at the hem. The lace bodice was framed by sheer puffy sleeves and lace collar. Lace accented the cuffs and the shoulder-length veil.

Carrying cascading miniature carnations, the bride was attended by the sister of the bridegroom, Mrs. Paul Kamba of Arlington, Minn. Her gown was made of blue cotton with embroidered eyelet trim. It also had lace collar and cuffs. Wearing a white hat with white and blue ribbons, the matron of honor carried a round bouquet of mums and miniature carnations.

The mother of the bride chose a sleeveless, empire waisted gown of yellow taffeta overlaid with lace, while the mother of the bridegroom was dressed in a long beige double knit gown tailored in the shirtwaist style.

The bridegroom was joined at the altar by Paul Kamba who served as best man.

Ushers were Terry McInnis, brother of the bride, and Andrew D. Braun of Dexter, the bride's cousin.

At the reception for 200 in Wythe Cafeteria the bridegroom's sisters, Cindy Bauer and Mrs. Edie Scott, poured the coffee and punch. Mrs. Duane Braun and Shirley McInnis, the bride's aunts, cut the cake. The guest book was passed by Mrs. Andrew D. Braun.

The new Mrs. Bauer left with her husband on their honeymoon dressed in a yellow pant suit.

HOUSEHOLD HINT
Wash walls by starting at the bottom and working up. In that way any dirty streaks running down on the clean part can be wiped off without leaving a mark that may be hard to remove.

For And About Teenagers



THIS WEEK'S LETTER: I column title to "For and Against Teenagers."

OUR REPLY: We thank you for some time now and I have become so disgusted, I decided to write and tell you just what I think of it. I must say, for the most part, you are not very open-minded toward the letters you receive. Your column is constantly putting down the people who are writing to you for help. These kids are telling you things that they can't go to their parents with, so why must you reply to them as if you were their parents? All I really ask is that your replies be more open-minded in the future. Talk to the kids on their own level, not their parents' or grandparents' levels. If you don't take what I have said under consideration, change your

Ann L. Travis, William Hutchison Wed Saturday at St. Paul Church

Miss Ann Lander Travis and William F. Hutchison were united in marriage last Saturday evening at St. Paul United Church of Christ. The Rev. Warner H. Siebert officiated.

Miss Travis is the daughter of Mr. and Mrs. William B. Travis of 16 Sycamore Dr., Chelsea. Mr. Hutchison's parents are Mrs. Dorothy A. Hutchison of Elkhart, Ind., and Robert A. Hutchison of Portland, Ore.

Soloist Bruce Galbraith of Chelsea sang "The Lord's Prayer" and a family friend, James Sharpe of Columbus, Neb., played the organ.

The bride was attired in a gown of ivory silk organza with a re-embroidered lace and pearl accents on the bodice, skirt, and attached train. Her veil was a matching camelot cap with a chapel mantilla.

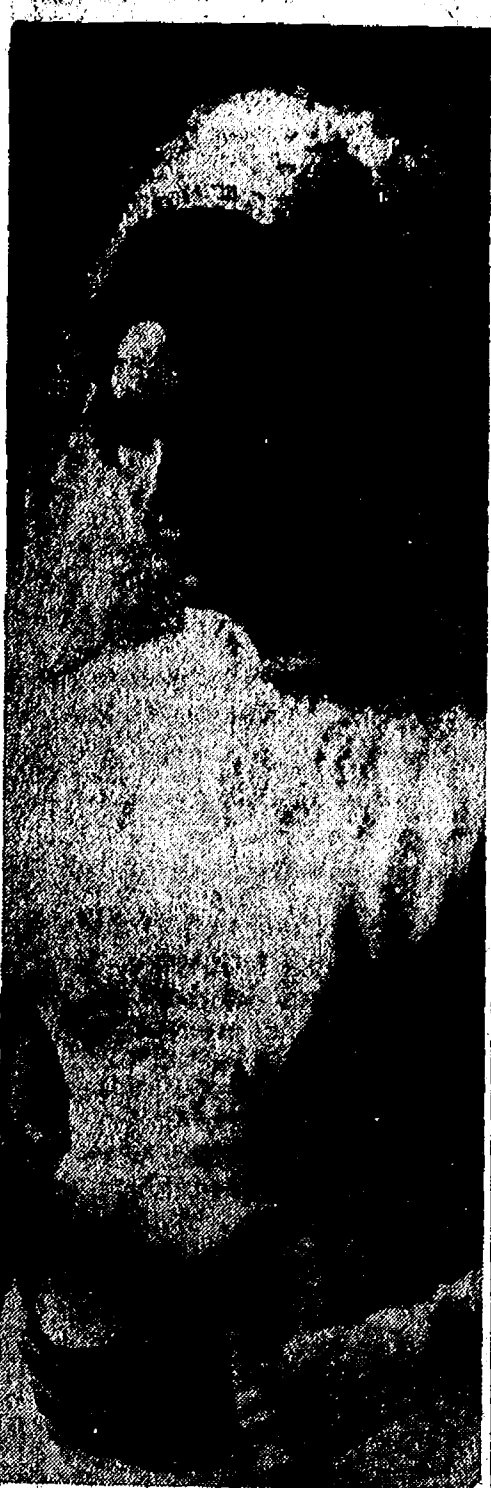
The matron of honor was the bride's sister, Mrs. Steven Magennis of Bloomington, Ind. Bridesmaids were Mrs. Warren Emmans of Grand Rapids, and Miss Susan Landers of Waterford. They wore identical empire gowns of gold silk organza and sheer sleeves with cut-away coats of venise embroidered organza.

John Best of Fremont, Ind., served Mr. Hutchison as honor attendant. Groomsmen were Carl Slabaugh of Elkhart, Ind., and Robert Walsh of Albion. Ushering were E. Dick Price, the bridegroom's brother-in-law, and Gary Boomershine, both of Elkhart.

The bride's mother wore a two-piece floor-length gown of pale pink satin crepe and lace. Mrs. Hutchison chose a lime green floor-length gown of satin crepe with jeweled trim and sheer bishop sleeves.

A reception followed the ceremony at Weber's Inn in Ann Arbor. Mrs. E. Dick Price, sister of the bridegroom from Elkhart, Ind., and Miss DeAnna Perry of Howell, cut the cake. Miss Terri Lynn Olive of Vienna, Va., cousin of the bride, attended the guest book.

Following a brief wedding trip, the couple will reside in Elkhart, Ind., where Mr. Hutchison is associated with Kaiser Aluminum & Chemical Corp. Both Mr. and Mrs. Hutchison are graduates of Olivet College in Olivet.



Mrs. William F. Hutchison

Walker Reunion Held Sunday at Petibone Home

The 48th annual Walker family reunion was held Sunday, Aug. 12, at the home of Mr. and Mrs. Earl Pettibone on Dancer Rd. The event was co-hosted by the Pettibone's daughter and her husband, Mr. and Mrs. Floyd (Jack) Fowler and the Fowlers' son Richard and his family.

Forty-two persons from Greenville, Westland, Williamston, South Lyon, Plymouth, and Dexter attended the gathering. Oldest guest was Mrs. Grace Parker, 90 years old. Youngest was Stacey Macomber, one year and nine months old, daughter of Mr. and Mrs. Kenneth Macomber of Westland.

Family officers elected at the reunion are: Glen Macomber of Westland, president; Mrs. James Walker of South Lyon, vice-president; Mrs. Ina Proctor of Dexter, secretary; and Jarlyn Macomber of Westland, treasurer.

One of the least known facts in modern American agriculture is that farmers for years have sought their profits through increased production and efficiency rather than in higher prices.

BOWLING

Men's Two-Lite Doubles FINAL STANDINGS

	W	L
Lyerla & Beason	67	31
J. Harook & N. Fahrner	63	35
R. Lewis & D. Alexander	63	35
Super	59	39
Double "M"	56	42
Harook & A. Sannes	52	46
Williams & Northrup	49	46
J. Bauer & R. Herrst	48	50
M. Ford & L. McKinnon	44	54
Armstrong & Sanderson	41	57
Bollinger-Buckingham	39	59
L. Bowers & L. Bauer	39	60
R. Weir & G. Cotton	34	64
B. Snyder & K. McCalla	33	65
600 series: D. Alexander	601	
500 series: F. Northrup	565	
Bauer	563	
Fahrner	540	
Lyerla	527	
Snyder	501	
200 games: D. Alexander	214	
E. Harook	209	
F. Northrup	201	
B. Maier	201	
B. Snyder	200	
Bauer	200	

Magic Mirror Beauty Salon

Open Tuesday thru Friday
Saturday, 8 a.m. to 3 p.m.
9 a.m. to 9 p.m.

PHONE 665-0816

GRAND OPENING KAREN'S BOUTIQUE

118 South Main

FRIDAY & SATURDAY, AUG. 17-18

SPECIAL ON WIGS
Reg. \$18.95 to \$30. NOW \$14.99

BODY SHIRTS
Reg. \$8. NOW \$6.00

Free Gift Certificates for \$20, \$10, \$5 purchases
to be given as door prizes.

Farmers received an increase of just 12 percent on the products they sold over the last 20 years. In fact, farm prices either declined or remained unchanged during 10 of the last 20 years.

SAVE TIME

Keep a list of items you have stored in the attic taped to the attic door. This saves time and energy when you are looking for a certain item.

Refresh with MILK

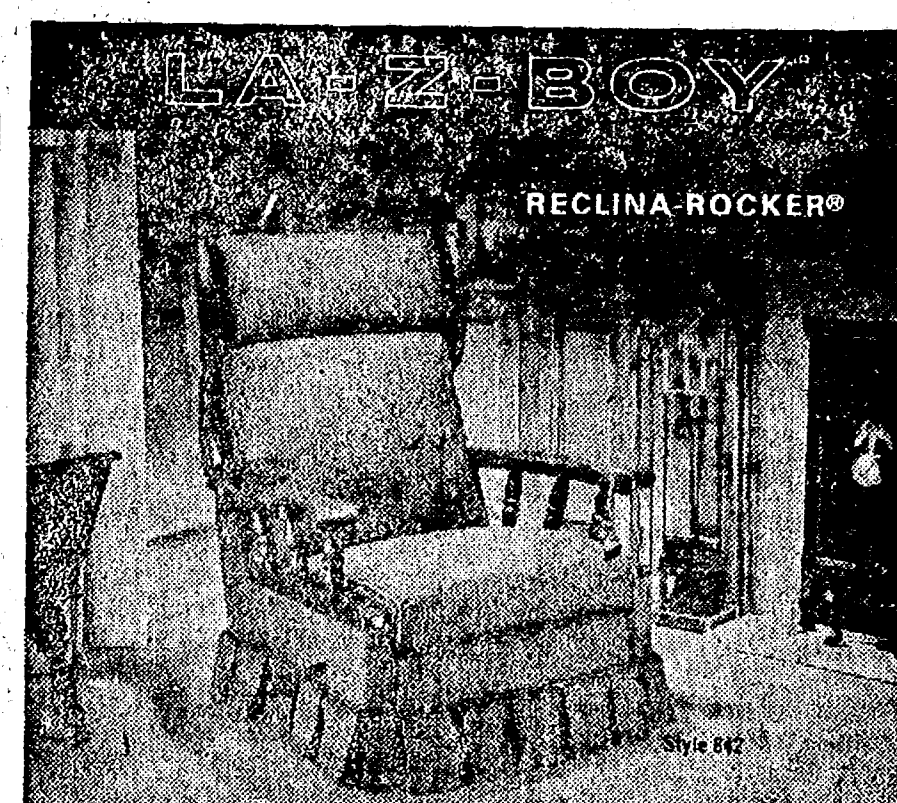


MILK is best for
your baby's health

Give Baby the right start in life with lots of milk. It's nature's most nearly perfect food... rich in vital food values that help little bodies grow up strong and healthy.

HICKORY RIDGE
FARM DAIRY

Successors to Weinberg Dairy
Stockbridge, Mich. Ph. (517) 851-3000



This chair is destined to be sought after by every member of your family. The generous proportions are enhanced by the burnished dark pine finish of the wood accents. It is fully reclining. It's the rocker that doesn't look like a rocker. LA-Z-BOY's exclusive Comfort Selector's three-position leg-rest can be easily adjusted with or without reclining the chair. This gracious styling is certain to add charm and warmth to your home. A selection can be made from hundreds of attractive decorator colors and fabrics; most of them treated with Scotchgard Fabric Protector.



Merkel Home Furnishings

Open Mon. & Fri. Until 9 Ph. 475-8621

CONSERVE ENERGY AND SAVE MONEY:

With your present air conditioning—portable or central.

Proper use and maintenance can keep efficiency up and operating costs down. Some of the things that help a lot are: keeping your air conditioner clean, not over-cooling and keeping it covered or indoors in the winter.

With the air conditioner you may buy.

You'll get the best air conditioning results if you buy a unit that's the right size for your room or home. It also should have a high Energy Efficiency Rating (7 or above). You may pay more, but its high efficiency will save on operating cost and conserve valuable energy.

With the right ventilation, shade and landscaping.

The outdoor portion of the unit should be shaded as much as possible, at least during the warmest parts of the day. Shading your home with trees, awnings, or vines can help even more. Light-colored paint and proper attic ventilation are also important.

With our free booklet.

We have lots more tips for you. Pick up your copy of "How To Get Your Money's Worth From Your Electric Air Conditioner" at your nearest Detroit Edison office. Or write us: Detroit Edison, Room 473-CB, 2000 Second Avenue, Detroit, Michigan 48226.

Detroit
Edison

'Fair Minded' Persons Find August Bustling with Fun

It's a fact that August is the best time to visit Chelsea. The weather is just what you need for a relaxing vacation. The town is full of life and activity. There are many things to see and do. The people are friendly and welcoming. The food is delicious. The scenery is beautiful. It's a perfect place to spend your summer vacation.

The town of Chelsea is a beautiful place to visit. It has a rich history and a vibrant culture. There are many things to see and do. The people are friendly and welcoming. The food is delicious. The scenery is beautiful. It's a perfect place to spend your summer vacation.

The town of Chelsea is a beautiful place to visit. It has a rich history and a vibrant culture. There are many things to see and do. The people are friendly and welcoming. The food is delicious. The scenery is beautiful. It's a perfect place to spend your summer vacation.

The town of Chelsea is a beautiful place to visit. It has a rich history and a vibrant culture. There are many things to see and do. The people are friendly and welcoming. The food is delicious. The scenery is beautiful. It's a perfect place to spend your summer vacation.

The town of Chelsea is a beautiful place to visit. It has a rich history and a vibrant culture. There are many things to see and do. The people are friendly and welcoming. The food is delicious. The scenery is beautiful. It's a perfect place to spend your summer vacation.

The town of Chelsea is a beautiful place to visit. It has a rich history and a vibrant culture. There are many things to see and do. The people are friendly and welcoming. The food is delicious. The scenery is beautiful. It's a perfect place to spend your summer vacation.

The town of Chelsea is a beautiful place to visit. It has a rich history and a vibrant culture. There are many things to see and do. The people are friendly and welcoming. The food is delicious. The scenery is beautiful. It's a perfect place to spend your summer vacation.

The town of Chelsea is a beautiful place to visit. It has a rich history and a vibrant culture. There are many things to see and do. The people are friendly and welcoming. The food is delicious. The scenery is beautiful. It's a perfect place to spend your summer vacation.

The town of Chelsea is a beautiful place to visit. It has a rich history and a vibrant culture. There are many things to see and do. The people are friendly and welcoming. The food is delicious. The scenery is beautiful. It's a perfect place to spend your summer vacation.

CHELSEA, MICHIGAN, THURSDAY, AUGUST 16, 1973



INTERNATIONAL MISSIONARIES will be in Dexter Aug. 19-22 to attend the Independent Gospel Missions Missionary Conference at Dexter Gospel Church. The team of pastors includes clergy-

Missionary Conference Slated

The first international missionary conference to ever be held in this area will be at the Dexter Gospel church, 2253 Baker Rd., Aug. 19-22, at 7 p.m. Taking part in the Independent Gospel Missions Missionary Conference will be men who are national leaders in their own countries and who are associated with the Independent Gospel Missions. The participants are: the Rev. Edwin T. Ormeo from the Philippines, the Rev. Joseph Benjamin Devadanam from India, the Rev. Chandra Michael Nanda also from India, the Rev. Daniel Wen from Taiwan, Dr. Samuel W. S. Cheng also from Taiwan, Republic of China, the Rev. Simon M. Ma. K. Vonde from Africa, the Rev. Isaac K. Vonde also from Africa. Traveling with the team of national pastors will be D. L. Boward, director of the Independent Gospel Missions with headquarters in New Castle, Pa. These national pastors will be dressed in their national costumes telling a different side of the missionary program that has not been heard before. They will be telling how some so-called missionaries (social workers) have used their people, never really giving forth the Word of God, as the folks back home thought they were doing. They will also be giving reports of how some "missionaries" lived "like kings and queens" and had nothing to do with the nationals. This missionary conference will prove to be a real eye-opener to missions. Every night there will be a time set aside for questions and answers. Dexter Gospel church and the Rev. Henry Campbell, pastor, welcome the public to each meeting.

Fish, Shellfish Offer Different Fare For Outdoor Cooking Enthusiast

Want to try something different at your next cookout? Why not grill some fish or shellfish. Most varieties are suitable for cooking on the outdoor grill and are in season now. They offer a pleasant change from the usual cook-out fare.

"Fish and Shellfish over the Coals," a booklet from the Department of Commerce, tells how to select fish and shellfish for the grill and how to prepare your fire. The booklet includes more than 30 recipes for preparing fresh, frozen or canned fish and shellfish, including cod, halibut, tuna, whitefish, trout, perch, salmon, swordfish, mullet, smelt, crab, shrimp, scallops and lobster. Copies of "Fish and Shellfish over the Coals" may be ordered for 75 cents from Consumer Product Information, Pueblo, Colo. 81009.

A properly prepared fire is essential to grilling fish or shellfish. The booklet offers the following tips on making the fire:

—If the bottom of the fire bowl is not perforated, use a gravel base to permit the fire to "breathe" and give an even-heat distribution. Use enough gravel to level the bed out to the edge of the bowl. Gravel or crushed stones to 3/4 inch in diameter will provide the best results.

—Start the fire early enough to get a good bed of coals before beginning to grill. One method, which takes about 45 minutes, is to stack briques in a pyramid and soak lightly with a lighting fluid. Let it stand one minute, then light. Stand back as far as possible when lighting the fire. NEVER USE GASOLINE!

—When the briquet surfaces are covered with a gray ash, spread the coals evenly and the fire is ready.

—Make the charcoal layer slightly wider than the food to be cooked on the grill.

—Wood chips give a pleasant smoky flavor to fish. Soak the

chips in water at least an hour before using so they will produce maximum smoke and not burn too rapidly. Add a few chips at a time while cooking. If the chips flame up, add more wet chips.

Remember, never overcook the fish or shellfish. They contain no tough connective tissues and cook very quickly. Fish should be cooked until the meat flakes easily when tested with a fork.

"Fish and Shellfish over the Coals" is one of more than 200 publications listed in the current issue of the "Consumer Product Information Index." Published quarterly by the Consumer Product Information Center of the General Services Administration, the Index is available free from Consumer Information, Pueblo, Colo. 81009 and at Federal Information Centers located throughout the country.

STEAM SPEEDERS
The first steam-powered automobile in the United States made its appearance around 1892 and had a top speed of 8 miles an hour. By 1906 an American-built Stanley Steamer held the world's speed record for automobiles: 127 miles an hour.

One out of every four acres of farm crops raised in the United States goes to another country.



CHELSEA COMMUNITY FAIR
Aug. 28 - Sept. 1

LARRY'S ROADSIDE MARKET

Halfway between Chelsea and Manchester on M-52,
1/4 mile south of Grass Lake Rd.

Now Open Every Day!
9 a.m. to 9 p.m. 7 days a week

HOME-GROWN	Cabbage lb. 8c
MICHIGAN	Cantaloupe ea. 49c
	Popsicles doz. 55c
	Nectarines 3 lbs. 98c

Farm Fresh Fruits, Vegetables - Bread - Milk - Eggs - Pop



BOAT SALE

All boats remaining in stock are on sale NOW. Prices are lowest ever on a wide variety of STARCRAFT and SEA SPRITE runabouts in aluminum or fiberglass, tri-hulls or V-hulls. We also have Marlin Jet Boats and feature a complete line of Evinrude Outboard Motors. Everything is priced to sell now! So come to our Boat Sale and find a good deal today.

COCHRAN'S SPORTING GOODS

Phone 434-2440 5511 W. Michigan Ave., Ypsilanti

Monday & Friday 9-9, Wednesday, Thursday, Saturday, 9-6
Closed Sunday and Tuesday

HIGHEST REGULAR PASSBOOK SAVINGS INTEREST

5 1/4%
PER ANNUM
EFFECTIVE ANNUAL RATE 5.35%

DAILY INTEREST

NO MINIMUM DEPOSIT—WITHDRAW ANYTIME!

AND FOR YOUR LONG TERM INVESTMENT DOLLAR, THESE HIGH PAYING PASSBOOK CERTIFICATE ACCOUNTS

6 1/2% PER ANNUM
6 3/4% PER ANNUM
7% PER ANNUM

FOR 12 MONTHS ON \$1000 OR MORE
EFFECTIVE ANNUAL RATE 6.66%

FOR 30 MONTHS ON \$5000 OR MORE
EFFECTIVE ANNUAL RATE 6.97%

FOR 48 MONTHS ON \$1000 OR MORE
EFFECTIVE ANNUAL RATE 7.19%

ALL DEPOSITS INSURED TO \$20,000 WITH THE FSLIC

WITHDRAWALS PRIOR TO MATURITY SUBJECT TO FEDERAL REGULATIONS

ANN ARBOR SAFE FEDERAL SAVINGS

the savings and loan specialists

ANN ARBOR OFFICES: Downtown, Liberty at Division; Westside, Pauline at Stadium; Eastside, Huron Parkway at Platt; Northside, Plymouth at Nixon; CHELSEA—Main Street near Old U.S. 12
Member: Federal Home Loan Bank System • Federal Savings and Loan Insurance Corporation

WANT ADS

Automotive Rust Proofing Cars and Trucks

Village
Motor Sales, Inc.
10000 W. Main St.
Chelsea, Mich. 48118
Phone 475-1301
Hours: 9 a.m. to 5 p.m.
Tues. thru Sat. 10 a.m. to 4 p.m.
Sun. 10 a.m. to 4 p.m.

WANT ADS

LEHMAN WAHL Land Appraisal Residential and Farm

2001 West Avenue Rd.
Manitoulin, Mich.
Area Code 313
425-4000

Chelsea Associated Builders

Custom Building and Remodeling.
Over 20 years experience.
Call 475-6182.

WANT ADS

NOW Full Time Complete Body Shop Service

Stop In For An Estimate
PALMER FORD
222 S. Main St.
475-1301

CUSTOM BUILDING

LICENSED & INSURED
FREE ESTIMATES
TOTAL
CONSTRUCTION
SERVICES

—Residential, commercial and industrial
—Garages
—Remodeling - Additions
—Aluminum Siding
—Roofing
—Tranching

SLOCUM CONTRACTORS & BUILDERS

Serving Washtenaw County
For Over 20 years
20700 OLD US-12
CHELSEA
Phone 475-8521 or 475-7611

Sylvan Township

15-ACRE parcel and a 30-acre parcel.
Chelsea schools. Excellent building location.

13 ACRES with flowing stream.
Terms.

4-BEDROOM brick home, 2-car garage, 7-acre lot, \$35,000, part down.

List your property with us for fast, efficient service.

R. D. MILLER, REAL ESTATE

Real Estate Broker
475-7811
15775 Cavanaugh Lake Rd.
Chelsea, Mich.

Siding, Roofing and Gutters

Reasonably priced and licensed,
**Mills
Construction Co.**
Call 851-8657
for free estimates.

THE LITTLE FLOWER SHOP

3451 Waltrous Rd., Chelsea
Phone GR 5-8508
We Deliver and Wire
Flowers, Corsages, Arrangements
and Plants.
Weddings and Funerals.

MUNITH AUCTION—100 Main St., Munith, Mich. Auction every Sunday, 2 p.m. Danny Fleming, auctioneer.

NOTICE—Anyone trespassing on the Fairgrounds will be picked up and prosecuted. Due to breaking of several strings of light bulbs, spot lights, quartz lights, mercury lights and glass breakage, the Fair will have to spend over \$200, plus labor to repair or replace. Fence cutters and rifles have done the damage. The fair will be building a new building. Don't trespass. John Wellnitz, Fair Board Treasurer, 10 PORTAGE LAKE—Deluxe 2-bed-room duplexes, 9680 Dexter-Pinckney Rd., 878-6829.

HOUSE FOR SALE in Stockbridge area. 6-room house, on 2 1/2 acres. Full basement, gas heat in Stockbridge area. Call 784-4887 after 5:30 except on week-ends.

CALL NOW SAVE \$\$\$ Greenwood

Siding - Remodeling
FREE ESTIMATES
Call
Chelsea 475-2400

WANT ADS

ROBERT PATRICK—Building and home improvement work and 2nd floor. Ph. 475-7777.

Gem Travel Trailers and Campers

PICK UP COVERS
4' ————— \$100.00
8' ————— \$179.00 and up

Triangle Sales Chelsea 475-4808

VACUUM CLEANERS — Electro- lux, authorized sales and service, James Cox, Manchester, Ph. 428- 2951 or 428-8521.

CAR RENTAL by the day, week- end, month or more. Full insur- ance coverage, low rates. Call Lyle Chrisswell at Palmer Motor Sales, 475-1801.

Complete Body Repair Service

Bumping - Painting
Windshield and Side Glass
Replacement
Free Pick-up & Delivery
Open Monday Until 9
CONTACT DON KNOLL
FOR FREE ESTIMATE

Village Motor Sales, Inc. IMPERIAL - CHRYSLER DODGE - PLYMOUTH

1185 Manchester Rd., Chelsea
Hours: 9 a.m. to 5 p.m.
Tues. thru Fri. Until 9 Monday.
9 a.m. to 2 p.m. Saturday

MINI-BIKES — Special, \$99.95, \$119.95, \$129.95 and up. Full line of Ruffs including the 50 cc's and 100 cc's. Also, 3-wheel ATVs from \$189.95 up. Go-Carts, \$189.95 up. Gemini 50 cc, 80 cc, 125 cc. Over 100 bikes in stock, parts and service on all makes. Open 9-9, Sunday, 12- 6. Coffman Sports Center, 1011 Lan- sing Ave., Jackson, Mich. x46tf

REPAIR SERVICE for household refrigerators, freezers and gar- bage disposers. Call Bill, 428-8314.

Headquarters for RED WING WORK SHOES

Foster's Men's Wear

FOR SALE—Chrysler Conqueror
motor boat, 130 h.p., outboard,
brand new, must sell. Ph. 475-
7402.

HELP WANTED Toys - Fun - \$\$\$

EVENINGS FREE? Turn spare
time hours into full-time earn-
ings demonstrating toys for

AMERICAN HOME TOY PARTIES

—No cash investment
—Commission to 25%
—Borrow-A-Kit Plan
—Name Brand Toys
—No collecting or delivery

Call Collect, Claudia
313-285-3804

SHOES \$1.00 up Bargain Floor DANCER'S

EXPERIENCED PAINTER will do
large or small jobs. Interior or
exterior, can furnish local refer-
ences, reasonable rates. Ph. 475-
1503.

PLANER MILL - TURRET LATHE IDOD GRINDER - N/C MACHINE MILLING MACHINE - JIG BORE MACHINE TOOL BUILDER BORING MILL

If you are a journeyman or have equivalent
experience in any of the above classifica-
tions, we can offer you an immediate posi-
tion. Good pay and excellent benefits, in-
cluding company paid life, health, and ac-
cident insurance, plus 12 paid holidays and
more.

WANT ADS

ELECTRICAL WIRING of all types. New and rewiring. Ph. 428- 2367.

EVINGER REAL ESTATE, Alpine Dexter, Ph. 428-4518.

Call US for transit mixed con-
crete. Klumpy Bros. Gravel Co.
Chelsea 475-2530, 4620 Love-
land Rd., Grass Lake, Mich. x40tf

TRAVEL TRAILERS — 18-ft. and up, 1945-55 ft. trailers. John R. Jones Trailer Sales, Gregory, Mich. Phone 496-2655.

WANTED — Carpentry work, any type. Charles Romine. Ph. 475- 7474.

FOR SALE—1 acre building site, Chelsea area. Phone 475-2828.

STOCKBRIDGE, 13 acres, commu- nity, on M-52. (517) 851-8144.

PIANO TUNING, Chelsea and area. Facilities for reconditioning and rebuilding. Used piano sales; re- conditioned grands and verticals. E. Ecklund, 428-4429.

ASPHALT PAVING Driveways - Parking Areas Landscaping - Site Work PREVO EXCAVATING CO. (517) 851-8608 or (313) 453-1027

GET YOUR POOL READY for summer. Complete line of swim- ming pool chemicals. 10% discount on all over \$10.00. Underground pools installed, complete. Prices start at \$3,200. Hilltop Plumbing, Inc. Ph. 475-2944.

ALLSTATE INSURANCE

AUTO - BOAT - COMMERCIAL
LIFE - HEALTH - HOME
Phone Eves. or Week-ends for
N. H. MILES, Agent
GR 5-8334

FOR SALE — Indian cents, post- cards, books, foreign coins, Australian opals, and other articles. Lawrence E. Guinan, 1971 Sugar Loaf Lake. Call 475-2317.

SEAMLESS ALUMINUM Eaves- troughs installed and guaran- teed. White and colors available. For free estimates, call Rick Klein- schmidt, R. D. Kleinschmidt Co., 428-8836.

WE NEED YOU

An aggressive, growing firm de-
pends upon the proper develop-
ment of its personnel. We work
hard for our sales people, and
we think you will learn more
about the fine art of selling from
The Gillies Co. than from any
other office in town. Depend on
it. Additional sales staff needed
in Ann Arbor, and soon for our
new Chelsea Sales Office. Please
call Mr. John Gillies for an in-
terview. 761-6130.

Garage Sale - Moving Sat.-Sun. 9 to 5, Aug. 18-19, 20800 Island Lake Rd. between Wen- ner & Stoffer Rds., Chelsea. Many new items — use as gifts. Jewelry, housewares, guitar, books, scraps, games, personal. Clothes, many new. Men's medium slim: sweaters, US Navy clothes, pants, shirts, new suit. Ladies size 14: lingerie, tops, evening gowns, good suits, dresses, shoes 10B. Old right piano, wash- er, dryer, make offer. Some an- tiques, much more.

LOVELY HOME for sale on the Au Sable River. Beautiful view from living room, raised fireplace, patio, plenty of closet and storage space. Insulated garage. Miles of state forest to hunt. Call or write State-Wide Real Estate, Sanford Markey, Realtor Associate, Ros- common, Mich. 48653. Phone (517) 275-8079.

FOR SALE—16-ft. travel trailer. Excellent condition. Ph. 475-8739.

'87 EL CAMINO. Dark blue, V-8, automatic, power steering, radio, posi-traction, good tires. Call 475- 7490.

NOW TAKING APPLICATIONS for help. Must be 16 or over. Male and female. Stuckey's Pe- can Shoppe, S. Fletcher Rd., Che- lsea.

WANT ADS

SECURITY GUARDS

Chelsea, Manchester
Whitmore Lake area.
Phone 781-5315
for appointment,
or apply at
290 S. Wagner Rd.
Ann Arbor

SANFORD SECURITY SERVICE, INC.

Pine Haven Saddlery

4634 Dexter Township Rd.
Phone Dexter 428-4288
Complete line of English and
Western equipment, 10% discount
to all 4-H Club members.
Store Hours: Mon.-Sat., 9-9
Sunday, 10-9

FOR REAL DOLLAR SAVINGS be sure and see us before you buy any new or used car. Palmer Motor Sales, Inc. Your Ford Deal- er for over 50 years.

D&G Allen Excavating

Septic, Tanks and Drainfields
Back Hoe and Dozing
Sand, Gravel and Topsoil Hauled
Phone (517) 851-8386
or (517) 851-8278

PICK-UP CAMPER TOPS \$89.95, \$149.95, \$189.95. Slant-side, cab- high, all colors. Also, 30-in. and 36-in. tops. Also, insulated paneled with screens. Save \$50. Coffman's Sports Center, 1011 Lansing Ave., Jackson, Mich. Open 9-9, Sundays 12-6.

USED CARS and TRUCKS

BOUGHT and SOLD

KETO, INC.

8080 Grand
DEXTER
Phone 428-4535

MODERNIZE YOUR HOME

Remodeling inside and out.
AWNINGS - PATIOS
Basements, under existing
homes or new.

Ken McDonough

770 Oak Hill Dr.
Brooklyn, Mich. 48230

Custom Built Homes

O-h! We Remodel too.
U-can count on us
N-o Job Too Small
T-rim Inside & Out
R-ough-in Only If
Y-u Want to Finish
S-iding Aluminum, 5" Gutters
I-mmediate Attention
D-ALE COOK & CO.
E-imates, Free

BUILDERS

Please Call
475-8863
L. LE COOK

COUNTRY DUPLEX, five years old, on 3/4 acre near Dexter. Landscaped and fenced. Blacktop parking and drive. Beautiful view of hills from back patio. Room for small garden. All electric, alu- minum siding. Built-in range and fan, matching refrigerator, attrac- tive kitchen cabinets, hardwood floors, tiled kitchen, dining and bath floors. Large bedroom, large living room, sliding glass doors off dining room to back patio. Now holding one apartment vac- ant for possible buyer. Selling price \$40,000. Terms if desired. Call for appointment, 428-8188.

MORGAN GELDING, 3 yrs. well trained. Horse boarding and rider training. 1-517-522-4765.

5-ROOM APARTMENT for rent.
\$125. No pets. 5911 Madden
Rd., Dexter. Ph. 428-3758.

WANT ADS

FOR RENT—Fair Service Center for meetings, parties, wedding receptions, etc. Wednesdays or Thurs- days. Contact John Wellnitz, phone 475-1818.

HAMMOND ORGAN teachers wanted to teach in their own homes. Call Grinnell Brothers, Ann Arbor, 962-5887.

Fireplace Builder

Field stone mason, block and brick
mason, tuck pointing.
FREE ESTIMATES
Call 475-8025 after 8 p.m.

Patrick Grammatico

DEPENDABLE TREE SERVICE

Cutting and removing. Call 428-
4116.

A & K MOWER SERVICE—All types of small engine repair. Free pick-up and delivery. 475- 2829.

MATTRESS and box spring. Double bed size, like new, \$55. Ph. 475-1986 or 475-2135.

LARGE CRIB of last year's ear- corn. 428-3722.

TODAY'S THOUGHT

By LOUIS BURGHARDT

When you are puzzled in how to use a product it is always
best to review the instruction sheet. Sometimes the instructions
appear to be unsatisfactory or not clear. You try it on your own
and struggle along without taking the time to read the in-
structions a second or third time. Dissatisfaction occurs. Dis-
couragement and disgust follows. Later on we sometimes find
we failed to follow the instructions — or ignored the cautions.

This sort of happening can in a sense be said to be the story
of some people's lives in their day by day living. They're dis-
satisfied, discouraged and disgusted. They envy and can not
understand the happiness of others. In these situations it can
unhesitatingly be said that they failed to follow time proved
instructions on how to live. It can be said with equal certainty
that cautions have been ignored on what to do and what not to do.
No one can deny — not even an atheist — that the best in-
struction sheets on how to live are the pages of the Bible . . .
BURGHARDT FUNERAL HOME, 214 East Middle St., Chelsea,
Mich. Phone 475-1551.

SPECIALS

U. S. NO. 1 MICHIGAN
Potatoes 10-lb. bag 99c

NORTHERN
Tissue 4-roll pac 39c

32-OZ. LIQUID LUX
Dish Soap 55c

ECKRICH SLICED
Bologna . . 1-lb. pkg. \$1.25

NO. 2 CAN DOLE SLICED, CRUSHED OR CHUNK
Pineapple 33c

KUSTERER'S FOOD MARKET

DIAL 475-2721 WE DELIVER

ways to benefit

WITH A CHECKING ACCOUNT

1. Good records
2. Safeguard cash
3. Pay by mail
4. Deposit by mail
5. Automatic receipts
6. Save time
7. Business-like money management

Open your Checking Account here!

CHELSEA STATE BANK

Member
Federal Reserve
System
Member
Federal Deposit
Insurance Corp.

DISCOUNT USED CAR SALE

	BOOK PRICE	DISCOUNT PRICE
1973 GRAM TORINO 4-DR. Factory spec	\$4295	\$3595
1973 GRAM TORINO 4-DR. Just like new	\$3795	\$3195
1972 CAMPI 1-DR. Air conditioned	\$2675	\$2295
1972 GRAM TORINO 2-DR. A Real Police Car	\$2475	\$2395
1972 PINTO 1-DR. Real Economical to drive	\$1895	\$1795
1971 FORD STATION WAGON Automatic trans, power	\$1950	\$1495
1971 THUNDERBIRD LANDAU All the extras	\$3950	\$2995
1971 GRAM TORINO GT A real beauty. One owner	\$2175	\$1995

SEE — John Popovich — Lyle Chrisswell Don Moore — Don Lawhorn

1971 MERCURY 2-DR. HARDTOP One owner	\$2100	\$1995
1971 LTD CONVERTIBLE Air, AM-FM Stereo	\$2450	\$1995
1971 DODGE STATION WAGON Air, automatic	\$2550	\$2495
1970 FORD STATION WAGON Automatic, power	\$1650	\$1295
1970 OLDS 88 2-DR. Air conditioned	\$1825	\$1295
1970 CHEV BEL AIR 4-DR. Automatic, power	\$1475	\$1295
1970 DODGE 4-DR. Air conditioned	\$1725	\$1195
1970 1/2 FALCON 2-DR. V-8, one owner	\$1400	\$ 995

OVER 50 USED CARS & TRUCKS TO CHOOSE FROM

1969 GALAXIE 500 2-DR. 2 to choose from	\$1175	\$ 995
1969 BUICK SPECIAL	\$1350	\$ 995
1969 CHRYSLER 4-DR. Air conditioned	\$1625	\$1195
1969 FAIRLANE 2-DR. Transportation	\$ 900	\$ 295
1968 LTD 4-DR. Real clean	\$1200	\$1095
1968 BUICK SKYLARK V-8, automatic	\$1275	\$1095
1968 PLYMOUTH STATION WAGON V-8, automatic	\$1400	\$ 995
1968 CADILLAC 4-DR. Sharp	\$1625	\$1095

HURRY! For Good Selection Sale Positively Ends Saturday, Aug. 31

1968 GALAXIE 500 XL Air conditioned	\$ 950	\$ 895
1968 MONTEGO 2-DR. V-8, automatic	\$ 925	\$ 795
1968 CHEV IMPALA 4-DR. Real clean	\$1025	\$ 995
1968 CHEV IMPALA CUSTOM V-8, automatic	\$1150	\$1095
1972 FORD 1/2 TON PICK-UP V-8. Like new	\$2675	\$2395
1971 RANCHERO PICK-UP Air conditioned	\$2525	\$2195
1971 CHEV 1/2 TON PICK-UP V-8, automatic. Camper Special	\$2695	\$2595
1970 INTERNATIONAL 1/2 TON PICK-UP 4-speed transmission	\$2000	\$1895

Open Monday thru Friday until 9:00. Sat. until 5:30
AT OUR TRIANGLE LOT
M-52 and Old Manchester Road

PALMER Ford

SINCE APRIL, 1912 CHELSEA 475-1301

Services in Our Churches

ST. THOMAS
Church of Christ
The Rev. Carl Johnson, Pastor
Sunday, Aug. 19—
9:00 a.m.—Worship service.
10:30 a.m.—Sunday school open
house until 4 p.m.
Wednesday, Aug. 22—
"Faith in Motion" Adult Edu-
cation Conference at Albion Col-
lege through Aug. 24.

ST. JACOB LUTHERAN CHURCH
Corner of Elmwood, Waters Rds.
(Baptist Community)
The Rev. John B. Roberts, Pastor
Sunday, Aug. 19—
9:00 a.m.—Sunday school
9:30 a.m.—Worship
10:30 a.m.—Worship

VILLAGE UNITED METHODIST
CHURCH OF WATERLOO
333 Washington St.
The Rev. Alvin Barnes, Pastor
Every Sunday—
9:30 a.m.—Sunday school
10:30 a.m.—Morning worship.
11:30 a.m.—Morning worship.

ST. JAMES EVANGELICAL AND
REFORMED CHURCH
(United Church of Christ)
Freedom Township
The Rev. Herman A. Rasmussen
Every Sunday—
10:30 a.m.—Worship.

ST. THOMAS
EVANGELICAL LUTHERAN
Corner of Elmwood and Waters Rds.
The Rev. Daniel L. Mathson, Pastor
Sunday, Aug. 19—
9:00 a.m.—Worship with Holy
Communion.
11:30 a.m.—Sunday school and
Bible class.
8:00 p.m.—Film Festival at
Freedom Township Hall.
Thursday, Aug. 23—
8:00 p.m.—Altar Guild.

ST. JOHN'S EVANGELICAL
AND REFORMED CHURCH
(United Church of Christ)
Francisco
Every Sunday—
10:00 a.m.—Worship service.
10:30 a.m.—Sunday school.

WATERLOO
FIRST UNITED METHODIST
Parks and Territorial Rds.
The Rev. Alvin Barnes, Pastor
Every Sunday—
9:15 a.m.—Morning worship.
10:30 a.m.—Morning worship.

ST. JACOB EVANGELICAL
LUTHERAN CHURCH
12501 Riedmiller Rd., Grass Lake
The Rev. Andrew Bloom, Pastor
Every Sunday—
9:00 a.m.—Worship service.
10:15 a.m.—Divine services.

BAHAI FIRESIDE
Every Thursday—
8:00 p.m.—At the home of Toby
Peterson, 705 S. Main St. Anyone
wishing to learn about the Bahai
faith is welcome.

FIRST UNITED
METHODIST CHURCH
The Rev. Dave Dickson, Pastor
Sunday, Aug. 19—
10:00 a.m.—Worship service.
Church school, nursery through
second grade.

FIRST ASSEMBLY OF GOD
The Rev. Thos. S. Thodson
Pastor
Every Sunday—
9:00 a.m.—Sunday school.
11:00 a.m.—Worship service.
6:00 p.m.—Youth service.
1:00 p.m.—Evangelistic service.
Every Wednesday—
10:00 a.m.—Ladies Bible Study.
7:00 p.m.—Midweek services.

CHURCH OF CHRIST
1061 Old US-12, East
David A. Rushlow
Every Sunday—
10:00 a.m.—Church school.
11:00 a.m.—Worship service.
Nursery will be available.
6:00 p.m.—Worship service.
Every Wednesday—
7:30 p.m.—Bible Study.

OUR SAVIOUR LUTHERAN
CHURCH
The Rev. William H. Keller,
Pastor
1315 S. Main, Chelsea
Each Sunday—
9:00 a.m.—Sunday school.
10:30 a.m.—Worship service.

FIRST CHURCH OF CHRIST,
SCIENTIST
1861 Washtenaw Ave., Ann Arbor
Every Sunday—
10:30 a.m.—Sunday school;
morning service.

GREGORY BAPTIST CHURCH
The Rev. Grant Lapham, Pastor
Every Sunday—
10:00 a.m.—Worship.
10:30 a.m.—Sunday school.
7:30 p.m.—Evening worship
service.

NORTH LAKE
UNITED METHODIST CHURCH
The Rev. J. William Todd, Pastor
Every Sunday—
9:30 a.m.—Worship service.
10:30 a.m.—Sunday school.
Every Tuesday—
7:00 p.m.—Choir rehearsal.
Every Thursday—
4:00 p.m.—Children's Choir re-
hearsal.
First Wednesday—
9:30 a.m.—Jane Circle.
Second Tuesday—
UMWCS.

ST. JOHN'S EVANGELICAL
AND REFORMED CHURCH
(United Church of Christ)
Rogers Corners
The Rev. Richard Campbell, Pastor
Every Sunday—
9:30 a.m.—Sunday school.
10:30 a.m.—Morning worship.

SALEM GROVE
UNITED METHODIST CHURCH
The Rev. J. William Todd, Pastor
Every Saturday—
2:30 p.m.—Choir rehearsal.
Every Sunday—
10:30 a.m.—Sunday school.
11:00 a.m.—Worship service.
Every Thursday—
4:00 p.m.—Children's Choir re-
hearsal.
First Wednesday—
2:00 p.m.—Church Women meet-
ing.

CHELSEA BAPTIST CHURCH
337 Wilkison
The Rev. James Stacey, Pastor
Every Sunday—
9:45 a.m.—Sunday school.
11:00 a.m.—Worship service.
Nursery care available during all
services.
6:00 p.m.—Junior and Senior
Baptist Youth Fellowship.
7:00 p.m.—Evening service.
Every Wednesday—
7:00 p.m.—Bible study and
prayer meeting.

IMMANUEL BIBLE CHURCH
145 E. Summit St.
The Rev. LeRoy Johnson, Pastor
Every Sunday—
9:45 a.m.—Sunday school, nur-
sery provided.
11:00 a.m.—Morning worship,
nursery provided.
Every Wednesday—
7:30 p.m.—Family hour, prayer
meeting and Bible study.
First Sunday of Month—
7:00 p.m.—Communion services.

METHODIST HOME CHAPEL
The Rev. R. L. Clemans, Chaplain
Every Sunday—
8:45 a.m.—Worship service.

CHELSEA MEDICAL CENTER
Every Other Wednesday—
1:30 p.m.—Worship service.

FIRST UNITED
PRESBYTERIAN CHURCH
Unadilla
The Rev. T.H. Liang
Every Sunday—
9:45 a.m.—Sunday school.
11:00 a.m.—Worship service.
Every Tuesday—
8:00 p.m.—Choir practice.

ST. PAUL
UNITED CHURCH OF CHRIST
The Rev. Warner Siebert, Pastor
Sunday, Aug. 19—
9:00 a.m.—Church school and
worship. Sermon title: "Haggai:
Prophet as Realist."
Tuesday, Aug. 21—
7:30 p.m.—Church Council.
Wednesday, Aug. 22—
"Faith in Motion" Conference
begins at Albion College, Albion,
through Aug. 24.

ST. MARY CATHOLIC CHURCH
The Rev. Fr. David Philip Dupuis
Pastor
Mass Schedule
Every Saturday—
4:00-5:00 p.m.—Confessions.
7:00 p.m.—Mass.
Immediately after 7 p.m. Mass—
Confession.
Every Sunday—
Winter schedule
8:00, 10:00, 12:00 noon.—Mass.
Summer schedule
7:00, 9:00, 11:00 a.m.—Mass.

ST. BARNABAS
EPISCOPAL CHURCH
2050 Old US-12
The Rev. C. Walton Fitch, Vicar
Telephone 424-8815
Every Sunday—
9:15 a.m.—Holy Communion,
first, third and fifth Sundays.
9:15 a.m.—Morning Prayer, sec-
ond and fourth Sundays.

NORTH SHARON
COMMUNITY BIBLE CHURCH
Sylvan and Washburn Rds.
The Rev. William Enslin, Pastor
Every Sunday—
10:00 a.m.—Sunday school.
(Nursery will be available.) Junior
church classes.
11:00 a.m.—Worship service.
6:00 p.m.—Senior High Youth
meeting. Youth Choir.
7:00 p.m.—Evening worship ser-
vices. (Nursery available.)
Every Wednesday—
7:00 p.m.—Bible study and pray-
er meeting. (Nursery available.)
Bus transportation available: 428-
7222.

SALEM GROVE
UNITED METHODIST CHURCH
The Rev. J. William Todd, Pastor
Every Saturday—
2:30 p.m.—Choir rehearsal.
Every Sunday—
10:30 a.m.—Sunday school.
11:00 a.m.—Worship service.
Every Thursday—
4:00 p.m.—Children's Choir re-
hearsal.
First Wednesday—
2:00 p.m.—Church Women meet-
ing.

CHELSEA BAPTIST CHURCH
337 Wilkison
The Rev. James Stacey, Pastor
Every Sunday—
9:45 a.m.—Sunday school.
11:00 a.m.—Worship service.
Nursery care available during all
services.
6:00 p.m.—Junior and Senior
Baptist Youth Fellowship.
7:00 p.m.—Evening service.
Every Wednesday—
7:00 p.m.—Bible study and
prayer meeting.

IMMANUEL BIBLE CHURCH
145 E. Summit St.
The Rev. LeRoy Johnson, Pastor
Every Sunday—
9:45 a.m.—Sunday school, nur-
sery provided.
11:00 a.m.—Morning worship,
nursery provided.
Every Wednesday—
7:30 p.m.—Family hour, prayer
meeting and Bible study.
First Sunday of Month—
7:00 p.m.—Communion services.

METHODIST HOME CHAPEL
The Rev. R. L. Clemans, Chaplain
Every Sunday—
8:45 a.m.—Worship service.

CHELSEA MEDICAL CENTER
Every Other Wednesday—
1:30 p.m.—Worship service.

FIRST UNITED
PRESBYTERIAN CHURCH
Unadilla
The Rev. T.H. Liang
Every Sunday—
9:45 a.m.—Sunday school.
11:00 a.m.—Worship service.
Every Tuesday—
8:00 p.m.—Choir practice.

SALEM GROVE
UNITED METHODIST CHURCH
The Rev. J. William Todd, Pastor
Every Saturday—
2:30 p.m.—Choir rehearsal.
Every Sunday—
10:30 a.m.—Sunday school.
11:00 a.m.—Worship service.
Every Thursday—
4:00 p.m.—Children's Choir re-
hearsal.
First Wednesday—
2:00 p.m.—Church Women meet-
ing.

CHELSEA BAPTIST CHURCH
337 Wilkison
The Rev. James Stacey, Pastor
Every Sunday—
9:45 a.m.—Sunday school.
11:00 a.m.—Worship service.
Nursery care available during all
services.
6:00 p.m.—Junior and Senior
Baptist Youth Fellowship.
7:00 p.m.—Evening service.
Every Wednesday—
7:00 p.m.—Bible study and
prayer meeting.

IMMANUEL BIBLE CHURCH
145 E. Summit St.
The Rev. LeRoy Johnson, Pastor
Every Sunday—
9:45 a.m.—Sunday school, nur-
sery provided.
11:00 a.m.—Morning worship,
nursery provided.
Every Wednesday—
7:30 p.m.—Family hour, prayer
meeting and Bible study.
First Sunday of Month—
7:00 p.m.—Communion services.

METHODIST HOME CHAPEL
The Rev. R. L. Clemans, Chaplain
Every Sunday—
8:45 a.m.—Worship service.

CHELSEA MEDICAL CENTER
Every Other Wednesday—
1:30 p.m.—Worship service.

FIRST UNITED
PRESBYTERIAN CHURCH
Unadilla
The Rev. T.H. Liang
Every Sunday—
9:45 a.m.—Sunday school.
11:00 a.m.—Worship service.
Every Tuesday—
8:00 p.m.—Choir practice.



COMMUNITY CO-OPERATION has always been a hallmark of Chelsea Farmers. The spirit has filtered down to the younger generation, too. These youngsters were seen Monday night preparing the horse barn at the fairgrounds during the annual

barn rake, a lack-lustre preface to the more glamor-ous days, Wednesday, Aug. 29, and Saturday, Sept. 1, when the riders will be showing off their mounts and their skills.

Modern farm machinery is helping farmers to do more work than ever before. Giant combines today harvest enough wheat in just one hour to make 20,000 loaves of bread while automatic bale wagons allow just one operator to stack more than 3,000 bales of hay in one day.

TOO BAD?
I could have been a trapeze artist but just couldn't get the hang of it.
Americans today eat 115.6 pounds of beef a year. In 1950 they were eating only 63.4 pounds of beef, per individual, each year.

SOME RATIO!
More than 73 percent of the United States live in just 1.5 percent of the land.
Farmers received only 40 cents of every dollar Americans spent of farm-produced foods, at the store in 1972.

TASK TIME
In the average family, house- hold tasks take about 67 hours a week!
When a farmer is his own boss, hired hand, an automatic bale wa- gon can be his best friend.

Disappearing Traffic Lights?
Pennsylvania Avenue, tradition- al parade route in Washington D. C., has disappearing traffic lights. Before parades, the poles in the center of the street are re- moved and the holes they leave are covered with metal plates.

ROCKCRETE PRODUCTS

6991 M-52 Phone 475-2848 Manchester

INTRODUCES THEIR TWO NEW RITE-WAY TRANSIT MIXERS

Contractor Saves Time and Labor with These New Mixers.

WASHED SAND & STONE
ROAD GRAVEL - LIMESTONE - TRANSIT MIX

CALL OR STOP IN

CHELSEA GLASS WORKS

WORKMANSHIP AND MATERIALS FULLY GUARANTEED.

Open Daily 8 a.m. to 5 p.m.; Sat. 8 a.m. to 1 p.m.

140 W. Middle, Chelsea Phone (313) 475-8667

WE REPAIR AND REPLACE:

- ★ STORE FRONTS
- ★ FURNITURE TOPS
- ★ SHOWER DOORS
- ★ THERMOPANES
- ★ AUTO GLASS - Including Windshields
- ★ MIRRORS
- ★ PATIO DOORS
- ★ TUB ENCLOSURES

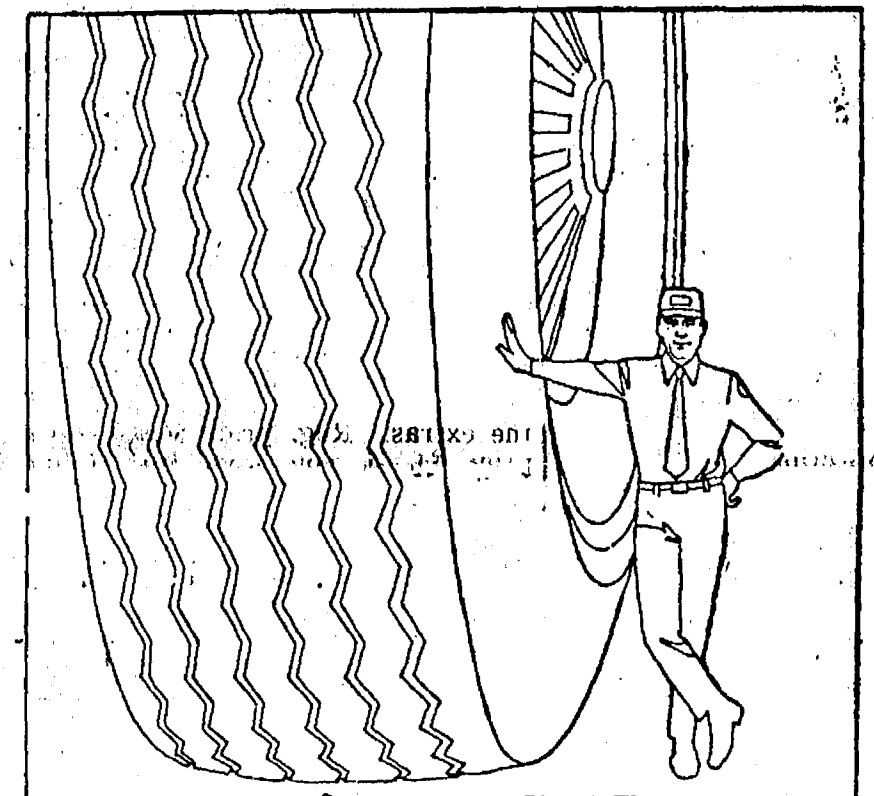
Free Pick-up and delivery on auto work.

Storm Door & Window Reglazing & Screens

COMMERCIAL BUILDINGS OR RESIDENTIAL

PROMPT SERVICE REASONABLE PRICES

Big sale now on Mobil tires!



Mobil Cushion 78 Tire

\$16⁷⁷
Suggested selling price. Plus \$1.73 Fed. Tax and your old tire (6.50x13 Tubeless Whitewall)

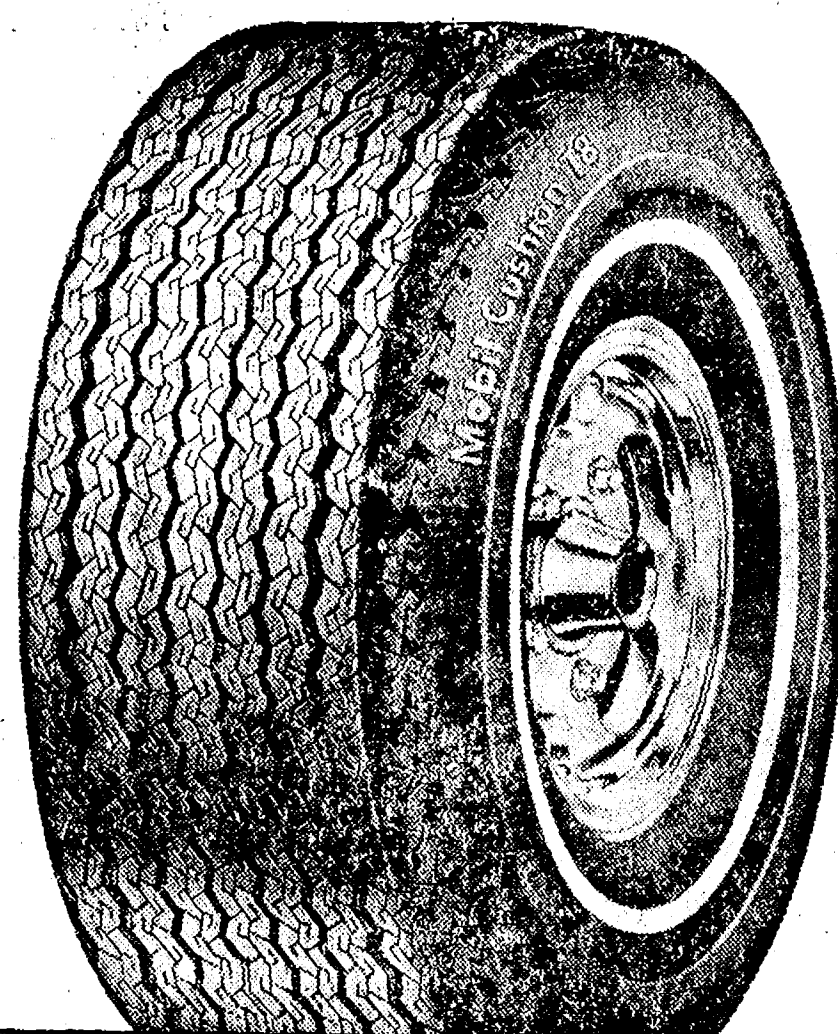
Charge it and pay monthly on your Mobil Credit Card. We also honor Master Charge, BankAmericard, American Express and Carte Blanche.

Mobil Cushion 78

Suggested selling price.

Sizes	Reg. Price	Sale Price	Fed. Tax
7.75x14	\$34.95	\$19.26	\$2.09
8.75x14	\$36.95	\$21.19	\$2.24
5.60x15	\$30.95	\$16.59	\$1.74

All dealers reserve the right to establish their own prices and discounts.



Mobil Cushion 78 Belted Tire

\$20¹⁰
Suggested selling price. Plus \$1.00 Fed. Tax and your old tire (8-78x13 Tubeless Whitewall)

Charge it and pay monthly on your Mobil Credit Card. We also honor Master Charge, BankAmericard, American Express and Carte Blanche.

Mobil Cushion 78 Belted

Suggested selling price.

Sizes	Reg. Price	Sale Price	Fed. Tax
F-78x14	\$40.95	\$27.08	\$2.53
G-78x14	\$42.95	\$29.30	\$2.67
H-78x14	\$44.85	\$31.43	\$2.75
F-78x15	\$50.95	\$32.44	\$2.54
G-78x15	\$52.95	\$33.20	\$2.73
H-78x15	\$54.95	\$34.40	\$2.96

All dealers reserve the right to establish their own prices and discounts.

Mobil®

PAINT SALE

PITTSBURG HOUSE PAINT

Latex or Oil Base . . . gal. **\$7⁴⁹**

Interior Flat Latex . . . gal. **\$6⁴⁹**

Paint Thinner gal. **99^c**

CHELSEA HARDWARE

110 S. Main St. Phone 475-1121

GLENN'S MOBIL SERVICE

GLENN HEIM, PROPRIETOR

PHONE 475-1767

CHELSEA, MICHIGAN

1629 M-52 & I-94



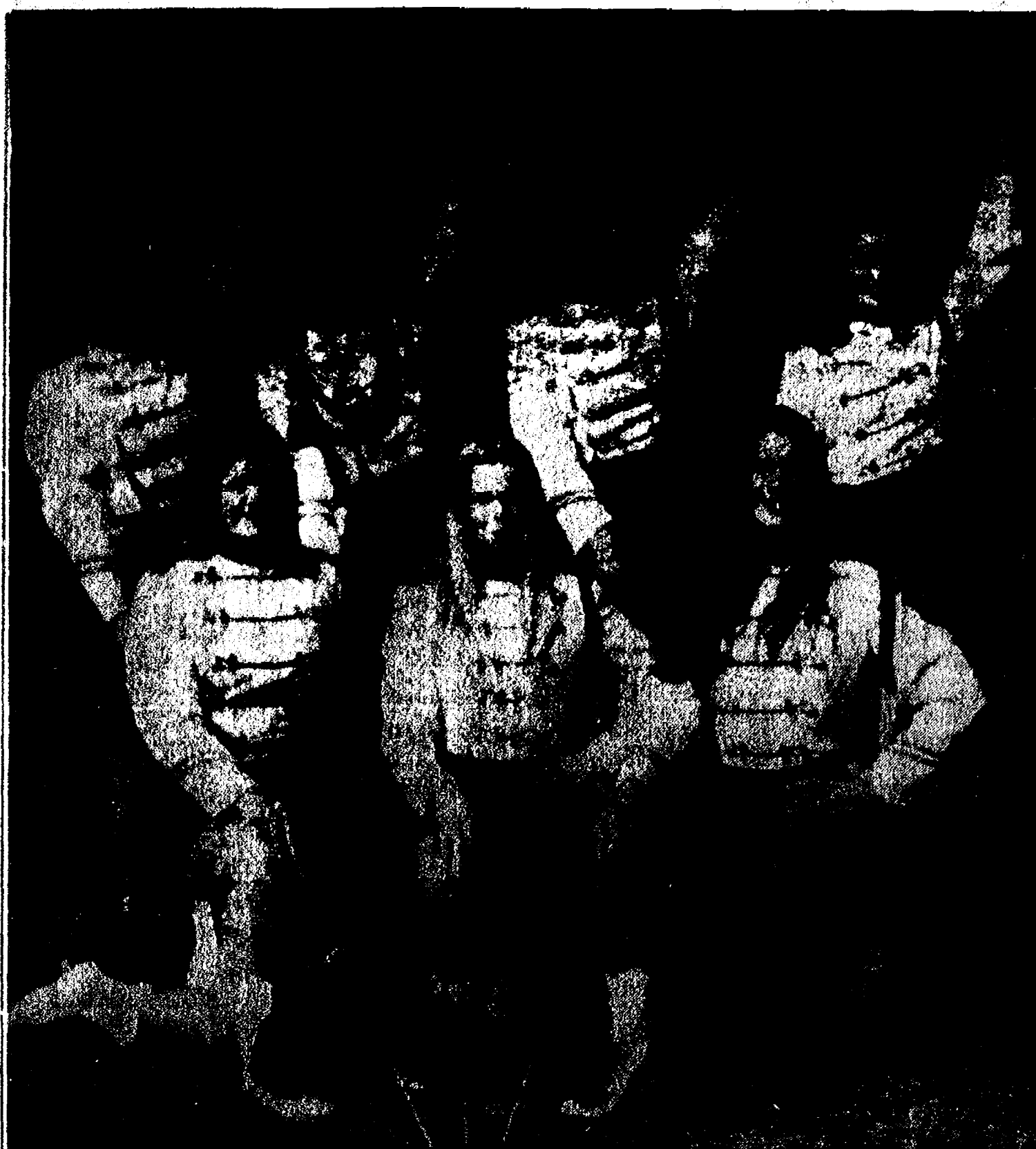
1101 M-52, Chelsea
Corner of M-52 and Old US-12

OPEN: 8 to 10 Daily
8 to 7 Sunday

THE PRICE BUSTERS

POLLY'S HOMOGENIZED MILK 88¢ <small>SAVE 14¢ LIMIT 1</small>	EXP. 8-19-73 LARK or EVE CIGARETTES \$2.98 <small>Carton SAVE 61¢ LIMIT 1</small>
EXP. 8-19-73 CRISCO SHORTENING 79¢ <small>3 Lb. Can SAVE 30¢ LIMIT 1</small>	EXP. 8-19-73 MAXWELL HOUSE COFFEE \$1.59 <small>2-Lb. Can SAVE 24¢ LIMIT 1</small>
EXP. 8-19-73 ARMOUR STAR ALL MEAT HOT DOGS 88¢ <small>12-Oz. Pkg. SAVE 21¢ LIMIT 1</small>	EXP. 8-19-73 ARMOUR'S LEAN FANCY CANNED HAM \$2.39 <small>1 1/2-Lb. SAVE 60¢ LIMIT 1</small>

ALL PURPOSE POTATOES	8-Lb. Bag	\$1.09
HOME GROWN HYDRA-COOL SWEET CORN	10 Ears	59¢
ARMOUR STAR MIRACURE SLICED BACON	12-Oz. Pkg.	\$1.29
PAW PAW CIDER VINEGAR	Gal.	77¢
ELF JUMBO TOWELS		28¢
NORTHERN BATHROOM TISSUE	4-Roll Pak	38¢
STA PUF FABRIC SOFTENER 1/2-Gal.		49¢
MRS. FILBERT MARGARINE	1-Lb.	29¢
PEPSODENT ADULT TOOTHBRUSH 3 for		\$1.00
FLAVORITE FROZEN VEGETABLES	10-Oz. Pkg. 5 for	\$1.00
BORDEN LITE LINE ICE CREAM	1/2-Gal. 2 for	99¢
VERNOR'S 100% NATURAL POP	(5 Flavors) 28-Oz. Bottle 4 for	\$1.00



TWIRLING AND STRUTTING were some of the skills practiced last week at the Smith-Walbridge Majorette Camp in Syracuse, Ind. All seven of Chelsea High's majorettes attended, thanks to a grant from the Band Boosters. They are pictured here standing, from left, Kathy Stoll, Jennifer Lane, Jeanne Thornton, Suzanne Morrison and kneeling, Vicki Push, Lisa Allhouse and Cindy Giffin.

PROCLAMATION

THE WASHTENAW HISTORICAL SOCIETY celebrates its 100th Anniversary on Thursday, August 16, 1973. The Society has a long record of collecting and preserving historic items of interest within the county.

On August 16, 1873, a group of pioneers met at the County Court House to form a pioneer Society which adopted as its purpose, "To collect and preserve biographical sketches and statistics, historical objects, facts and reminiscences and to preserve and transmit the same to future generations."

In the intervening years the Society has collected a large number of historical objects and data. The Society has furnished historic buildings with some of these objects and is now engaged in developing a permanent museum to house these historical items as well as preserve the trades of the past.

THEREFORE, I, A. E. Fulks, president of the Village of Chelsea, Michigan, declare August 16, 1973 Washtenaw Historical Day.

SOUTH OF ALBANY!

A 570 million-year-old clam, 70 million years older than any previously known, has been discovered near Schodack Landing, 10 miles south of Albany, New York.

Telephone Your Club News To 475-1371

DANGEROUS DARTS!

Darts dipped in the most potent frog toxins can paralyze and kill small game within minutes.

MOVING OUT?

The moon's orbit around the earth moves out into space about one foot every 30 years.

FURNITURE and HOUSEHOLD

AUCTION

As we are moving to Florida, a public auction will be held, located 1 mile northwest of Chelsea on M-52 to Workner Rd., north 4 miles to Territorial Rd., west 1 1/2 miles to Island Lake Rd., south 1/4 mile, or 2 miles west of North Lake on Territorial Rd. to Island Lake Rd., south 1/2 mile, house No. 109.

12:30 p.m. **SAT., AUG. 18** 12:30 p.m.

Phone Stockbridge (517) 851-8042 **PRICE BROTHERS AUCTIONEERS** Phone Stockbridge (517) 851-8042

Household - Furniture - Shop Tools

Hashberry 3-piece bedroom suite, twin bed, complete.
Antique sewing rocker.
Coffee table.
Mahogany dresser and mirror.
Small commode.
Metal wardrobe cabinet.
End tables.
Corner step table.
Antique rocking chair.
Curtis-Mathes 23-in. TV, good.
8 wooden chairs. 2 card tables.
Portable radio. Porch glider.
2 metal porch chairs.
Table top barbecue grill.
4 picnic tables.
Lamp post, new.
Kenmore floor fan.
Sensoco wooden clock.
Large frame mirror.
Quantity lamps, books, games, curtains, linens, bedspreads.
Real nice drapes, assorted sizes.
Odds and ends of dishes, cooking utensils, small appliances - all real nice.

Quantity good men's and women's clothing.
Rubber-tired wheelbarrow.
M-W portable air compressor & hose.
Craftsman 12-inch band saw.
Bench grinder with 1/4 h.p. motor.
Power sander.
1/2-ton chain fall.
6 1/4-in. Skil saw.
Black & Decker 1/2-in. drill.
Two 7.50x14 snow tires.
Bench vice. Lawn sweeper.
Aluminum extension ladder.
Quantity good hand tools.
C-Clamps. Socket sets.
Garden tools. Garage dolly.
Storm windows.
Cottage window frames.
Tool boxes. Machinist tools.
Auto repair books.
Bolts, nuts, screws, etc.
— The above shop tools are in good condition

TERMS: Cash, Not responsible for accidents or items after sold.

J. E. NETTERSTROM
OWNER

14 The Chelsea Standard, Thursday, August 16, 1973

Sidewalk Sale Defeats Plans For Carnival

Christine Schirmacher's efforts to provide a fun-filled carnival while collecting donations to fight Muscular Dystrophy were all for naught last week-end.

Nobody came. The carnival, complete with fortune telling booth, a ring toss, a bean bag toss, pop corn and several raffles drew a crowd of one.

"It's enough to really disappoint a newcomer, especially after hearing so much about Chelsea," said Christine's brother, William, who recently moved here. He and his wife helped Mr. and Mrs. Eugene Schirmacher support Christine in her efforts.

But Christine hasn't given up. She'll try again next Saturday when again her back yard at 642 S. Main St. will be turned into a Carnival Against Dystrophy. The gates open at 1 p.m.

For a nickel ticket you can try your luck at the ring toss or at the fortune teller's. For a little more you can buy a chance in the raffle for a fondue set, a clock or a stuffed dog.

The prizes were donated by friends and merchants. They are worth taking a chance on, especially for such a worthy cause.

Christine hopes the turn-out will be better next week-end since she won't be competing with the Sidewalk Sals. Let's hope she's not disappointed a second time.

TWO RECIPE FILES

For well organized menu planning keep two recipe file boxes — one for new recipes and one for tested and approved ones.

Youths Plead Guilty To Reduced Charge of Tampering with Auto

Charles Cullon Hodge, Jr., and James J. Riley, 17-year-olds who were arrested by Chelsea Police July 27, pled guilty in 14th District Court this week.

They had originally been charged with possession of a stolen automobile, a felony, but the charge was reduced to the misdemeanor of tampering with an auto.

They will be sentenced Sept. 28.

Mobil-Toons By GLENN



"I've already checked my tires and they're all there!"

No trouble lady, that's just part of our service!

GLENN'S MOBIL SERVICE

1629 M-52 & I-94
CHELSEA, MICHIGAN
Phone 475-1767
GLENN HEIM
PROP.

FREE ICE MAKER

included with this

NEW Long-Life **Amana**® Side-by-Side Refrigerator-Freezers!



FIRST 25 cu. ft. side-by-side that's only 35 3/4" wide!

Exclusive Amana features you'll use everyday!

- Hi Humidity Compartment — keeps leafy vegetables as long as three whole weeks
- "A Little Refrigerator in the Big Refrigerator" — just for fresh meat — keeps meat two times longer than ordinary pans
- Adjustable refrigerator shelves you can put in any position you want
- Two independent cold controls — one for the freezer, one for the refrigerator. Set one without affecting the other.

IN 329 Quick Change COLORS

Amana 5 YEAR WARRANTY

Amana warrants for 5 years from date of original purchase in U.S. free replacement or repair including related labor of parts found defective as to workmanship or material under normal use, and returned through Amana's distributor organization. Owner is responsible for local cartage, replacement of gas, rubber or plastic parts and light bulbs. Any product subjected to accident, misuse, negligence, abuse, defacement of serial plate or alteration shall void the warranty. In Canada, the warranty applies as above except that it does not cover taxes, duties, assessments levied at time of part export.

HEYDAULFF'S

113 N. Main St., Chelsea

Phone 475-1221